

**TECHNICAL MANUAL**

**ORGANIZATIONAL, DIRECT SUPPORT, AND  
GENERAL SUPPORT MAINTENANCE  
REPAIR PARTS AND SPECIAL TOOLS LIST  
INCLUDING DEPOT MAINTENANCE  
REPAIR PARTS AND SPECIAL TOOLS**

**FOR**

**SHOP EQUIPMENT  
GUIDED MISSILE SYSTEM,  
CONTACT SUPPORT SET  
4935-01-130-1029**

**BRADLEY FIGHTING VEHICLE TOW SUBSYSTEM**

TECHNICAL MANUAL

No. 9-4935-453-24P

HEADQUARTERS ,  
Department OF THE ARMY  
Washington, D. C. , 2 December 1984

**Organizational, Direct Support, and General Support Maintenance**

**Repair Parts and Special Tools List**

**(Including Depot Maintenance Repair Parts and Special Tools)**

**FOR**

**SHOP EQUIPMENT GUIDED MISSILE SYSTEM, CONTACT SUPPORT SET**

**4935-01-130-1029**

**(BRADLEY FIGHTING VEHICLE TOW SUBSYSTEM)**

**Current as of 5 April 1984**

**REPORTING OF ERRORS AND RECOMMENDING IMPROVEMENTS**

You can help improve this manual. If you find any mistakes or if you know of a way to improve the procedures, please let us know. Mail your letter, DA Form 2028 (Recommended Changes to Publications and Blank Forms), or DA Form 2028-2 located in back of this manual direct to: Commander, U. S. Army Missile Command, ATTN: AMSM1-MMC-LS-LP, Redstone Arsenal AL 35898. A reply will be furnished to you.

**Table of Contents**

	Page	Illus Figure
Section I. Introduction . . . . .	1-1	
II. Repair parts list . . . . .	2-1	
Group		
0010 Shop Equipment, Contact Support Set, 11508963. . . .	2-13	1
0020 .Blower Assembly, 10698115. . . . .	2-16	2
0040 .Equipment, Electrical, 10698124. . . . .	2-18	3
Section III. Special tools list (not applicable)		
IV. NSN, Part No. Index . . . . .	4-1	
Supplemental NSN, Part No. Index . . . . .	4-3	

**\*This manual supersedes TM 9-4935-453-24p, 10 June 1983.**

## SECTION 1. INTRODUCTION

1. **Scope.**

This manual lists and authorizes spares and repair parts; special tools; special test, measurement, and diagnostic equipment (TMDE); and other special support equipment required for performance of organizational, direct support, and general support maintenance of the Shop Equipment, Contact Support Set, Bradley Fighting Vehicle System. It authorizes the requisitioning, issue, and disposition of spares, repair parts and special tools as indicated by the Source, Maintenance and Recoverability (SMR) Codes.

2. **General.**

This Repair Parts and Special Tools List (RPSTL) is divided into the following sections:

**a. Section II. Repair Parts List.** A list of spares and repair parts authorized by this RPSTL for use in the performance of maintenance. The list also includes parts which must be removed for replacement of the authorized parts. Parts lists are composed of functional groups in ascending alphanumeric sequence, with the parts in each group listed in ascending figure and item number sequence. Bulk materials are listed in NSN sequence.

**b. Section III. Special Tools List.** A list of special tools, special TMDE, and other special support equipment authorized by this RPSTL for the performance of maintenance.

**co Section IV. National Stock Number and Part Number Index.** A list, in National item identification number (NIIN) sequence, of all National stock numbers (NSN) appearing in the listings, followed by a list in alphanumeric sequence of all part numbers appearing in the listings. National stock numbers and part numbers are cross-referenced to each illustration figure and item number appearance.

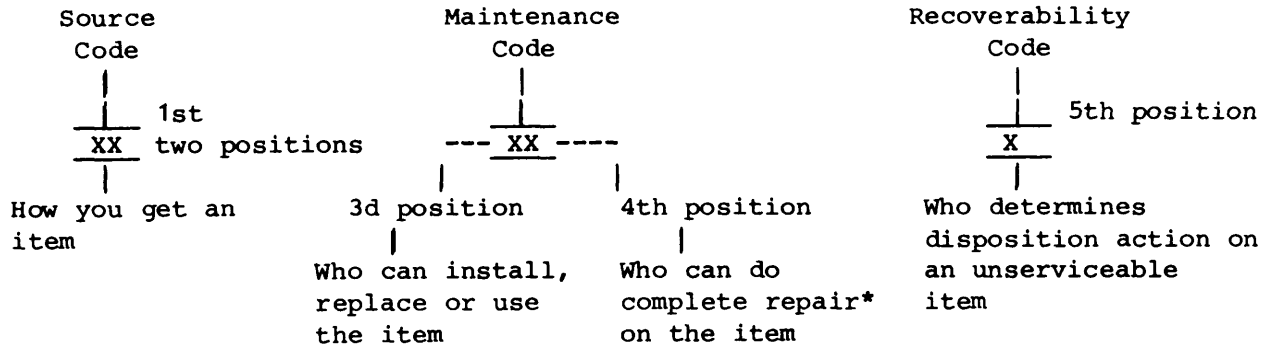
3. **Explanation of Columns.**

**a. Illustration (Column (I)).** This column is divided as follows:

(1) **((a) FIG NO.) Figure Number.** Indicates the figure number illustrating an exploded view of a functional group.

(2) **((b) ITEM NO.) Item Number.** Indicates the number used to identify items called out in the illustration.

b. SMR CODE (Column (2)). The Source, Maintenance, and Recoverability (SMR) Code is a 5-position code containing supply/requisitioning information, maintenance category authorization criteria, and disposition instruction, as shown in the following breakout:



\*Complete Repair: Maintenance capacity, capability, and authority to perform all the corrective maintenance tasks of the "Repair" function in a use/user environment in order to restore serviceability to a failed item.

(1) Source Code. The source code tells you how you get an item needed for maintenance, repair, or overhaul of an end item/equipment. Source codes are always the first two positions of the SMR Code. Explanations of source codes follow:

<u>Code</u>	<u>Explanation</u>																								
<table border="0" style="border-collapse: collapse;"> <tr><td style="border-right: 1px solid black; padding-right: 5px;">PA</td><td style="border-right: 1px solid black; padding-right: 5px;"> </td></tr> <tr><td style="border-right: 1px solid black; padding-right: 5px;">PB</td><td style="border-right: 1px solid black; padding-right: 5px;"> </td></tr> <tr><td style="border-right: 1px solid black; padding-right: 5px;">PC</td><td style="border-right: 1px solid black; padding-right: 5px;"> </td></tr> <tr><td style="border-right: 1px solid black; padding-right: 5px;">PD</td><td style="border-right: 1px solid black; padding-right: 5px;">---</td></tr> <tr><td style="border-right: 1px solid black; padding-right: 5px;">PE</td><td style="border-right: 1px solid black; padding-right: 5px;"> </td></tr> <tr><td style="border-right: 1px solid black; padding-right: 5px;">PF</td><td style="border-right: 1px solid black; padding-right: 5px;"> </td></tr> <tr><td style="border-right: 1px solid black; padding-right: 5px;">PG</td><td style="border-right: 1px solid black; padding-right: 5px;"> </td></tr> </table>	PA		PB		PC		PD	---	PE		PF		PG		<p>Stocked items; use the applicable NSN to request/requisition items with these source codes. They are authorized to the category indicated by the code entered in the 3d position of the SMR Code.</p>										
PA																									
PB																									
PC																									
PD	---																								
PE																									
PF																									
PG																									
-----																									
<table border="0" style="border-collapse: collapse;"> <tr><td style="border-right: 1px solid black; padding-right: 5px;">KD</td><td style="border-right: 1px solid black; padding-right: 5px;"> </td></tr> <tr><td style="border-right: 1px solid black; padding-right: 5px;">KF</td><td style="border-right: 1px solid black; padding-right: 5px;"> </td></tr> <tr><td style="border-right: 1px solid black; padding-right: 5px;">KB</td><td style="border-right: 1px solid black; padding-right: 5px;"> </td></tr> </table>	KD		KF		KB		<p>Items with these codes are not to be requested/requisitioned individually. They are part of a kit which is authorized to the maintenance category indicated in the 3d position of the SMR code. The complete kit must be requisitioned and applied.</p>																		
KD																									
KF																									
KB																									
<table border="0" style="border-collapse: collapse;"> <tr><td style="border-right: 1px solid black; padding-right: 5px;">MO-</td><td style="border-right: 1px solid black; padding-right: 5px;">(Made at Org/</td><td style="border-right: 1px solid black; padding-right: 5px;"> </td></tr> <tr><td style="border-right: 1px solid black; padding-right: 5px;"></td><td style="border-right: 1px solid black; padding-right: 5px;">Category)</td><td style="border-right: 1px solid black; padding-right: 5px;"> </td></tr> <tr><td style="border-right: 1px solid black; padding-right: 5px;">MF-</td><td style="border-right: 1px solid black; padding-right: 5px;">(Made at DS/</td><td style="border-right: 1px solid black; padding-right: 5px;"> </td></tr> <tr><td style="border-right: 1px solid black; padding-right: 5px;"></td><td style="border-right: 1px solid black; padding-right: 5px;">Category)</td><td style="border-right: 1px solid black; padding-right: 5px;"> </td></tr> <tr><td style="border-right: 1px solid black; padding-right: 5px;">MH-</td><td style="border-right: 1px solid black; padding-right: 5px;">(Made at GS/</td><td style="border-right: 1px solid black; padding-right: 5px;"> </td></tr> <tr><td style="border-right: 1px solid black; padding-right: 5px;"></td><td style="border-right: 1px solid black; padding-right: 5px;">Category)</td><td style="border-right: 1px solid black; padding-right: 5px;"> </td></tr> <tr><td style="border-right: 1px solid black; padding-right: 5px;">MD-</td><td style="border-right: 1px solid black; padding-right: 5px;">(Made at</td><td style="border-right: 1px solid black; padding-right: 5px;"> </td></tr> <tr><td style="border-right: 1px solid black; padding-right: 5px;"></td><td style="border-right: 1px solid black; padding-right: 5px;">Depot)</td><td style="border-right: 1px solid black; padding-right: 5px;"> </td></tr> </table>	MO-	(Made at Org/			Category)		MF-	(Made at DS/			Category)		MH-	(Made at GS/			Category)		MD-	(Made at			Depot)		<p>Items with these codes are not to be requested/requisitioned individually. They must be made from bulk material which is identified by NSN <i>in</i> the Description column and listed in the Bulk Material group in the repair parts list in this manual. If the item is authorized to you by the 3d position code of the SMR Code, but the source code indicates it is made at a higher category, order the item from the higher category of maintenance.</p>
MO-	(Made at Org/																								
	Category)																								
MF-	(Made at DS/																								
	Category)																								
MH-	(Made at GS/																								
	Category)																								
MD-	(Made at																								
	Depot)																								

AO-(Assembled by Org Category)	Items with these codes are not be to requested/requisitioned individually. The parts that make up the assembled item must be requisitioned or fabricated and assembled at the category of maintenance indicated by the source code. If the 3d position code of the SMR Code authorizes you to replace the item, but the source code indicates the item is assembled at a higher category, order the item from the higher category of maintenance.
AF-(Assembled by DS Category)	
AH-(Assembled by GS Category)	
AD-(Assembled at Depot)	

**XA** - Do not requisition an "XA"-coded item. Order its next higher assembly. (Also, refer to the NOTE below.)

**XB** - If an "XB" item is not available from salvage, order it using the FSCM and part number given.

**xc** - Installation drawing, diagram, instruction sheet, field service drawing, that is identified by manufacturer's part number.

**XD** - Item is not stocked. Order an "XD"-coded item through normal supply channels using the FSCM and part number given, if no NSN is available.

NOTE: Cannibalization or controlled exchange, when authorized, may be used as a source of supply for items with the above source codes, except for those source coded "XA" or those aircraft support items restricted by requirements of AR 700-42.

(2) Maintenance Code. Maintenance codes tell you the category(s) of maintenance authorized to USE and REPAIR support items. The maintenance codes are entered in the third and fourth positions of the SMR Code as follows:

(a) The maintenance code entered in the third position tells you the lowest maintenance category authorized to remove, replace, and use an item. The maintenance code entered in the third position will indicate authorization to one of the following categories of maintenance.

<u>Code</u>	<u>Application/Explanation</u>
c	- Crew or operator maintenance done within organizational or aviation unit maintenance.
o	- Organizational or aviation unit category can remove, replace and use the item.
F	- Direct support or aviation intermediate category can remove, replace, and use the item.
H	General support category can remove, replace, and use the item.
L	Specialized repair activity can remove, replace, and use the item.
D	Depot category can remove, replace, and use the item.

(b) The maintenance code entered in the fourth position tells you whether or not the item is to be repaired and identifies the lowest maintenance category with the capability to do complete repair (i.e., perform all authorized repair functions). (NOTE: Some limited repair may be done on the item at a lower category of maintenance, if authorized by the Maintenance Allocation Chart (MAC) and SMR Codes.) This position will contain one of the following maintenance codes.

<u>Code</u>	<u>Application/Exp lanation</u>
0	- Organizational or aviation unit is the lowest category that can do complete repair of the item.
F	- Direct support or aviation intermediate is the lowest category that can do complete repair of the item.
H	- General support is the lowest category that can do complete repair of the item.
L	- Specialized repair activity (designate the specialized repair activity) is the lowest category that can do complete repair of the item.
D	- Depot is the lowest category that can do complete repair of the item.
z	- Nonreparable. No repair is authorized.
B	- No repair is authorized. (No parts or special tools are authorized for the maintenance of a "B" coded item). However, the item may be reconditioned by adjusting, lubricating, etc., at the user level.

(3) Recoverability Code. Recoverability codes are assigned to items to indicate the disposition action on unserviceable items. The recoverability code is entered in the fifth position of the SMR Code as follows:

<u>Recoverability Codes</u>	<u>Definition</u>
z	- Nonreparable item. When unserviceable, condemn and dispose of the item at the category of maintenance shown in 3d position of SMR Code.
o	- Repairable item. When uneconomically repairable, condemn and dispose of the item at organizational or aviation unit category.
F	- Repairable item. When uneconomically repairable, condemn and dispose of the item at the direct support or aviation intermediate category.
H	- Repairable item. When uneconomically repairable, condemn and dispose of the item at the general support category.

- D - Repairable item. When beyond lower category repair capability, return to depot. Condemnation and disposal of item not authorized below depot category.

Recoverability  
Codes

Definition

- L - Repairable item. Condemnation, and disposal not authorized below specialized repair activity.

- A - Item requires special handling or condemnation procedures because of specific reasons (i.e., precious metal content, high dollar value, critical material, or hazardous material) . Refer to appropriate manuals/directives for specific instructions.

C. National Stock Number (Column (3)). Lists the National stock number assigned to the item. Use the NSN for requests/requisitions.

d. FSCM (Column (4)). The Federal Supply Code for Manufacturer (FSCM) is a 5-digit numeric code which is used to identify the manufacturer, distributor, or Government agency, etc., that supplies the item.

e. Part Number (Column (5)). Indicates the primary number used by the manufacturer (individual, company, firm, corporation, or Government activity), which controls the design and characteristics of the item by means of its engineering drawings, specifications standards, and inspection requirements to identify an item or range of items.

NOTE: When you use an NSN to requisition an item, the item you receive may have a different part number from the part ordered, but go ahead and use or furnish it as the replacement part.

f. Description (Column (6)). This column includes the following information:

(1) The Federal item name and, when required, a minimum description to identify the item.

(2) The physical security classification of the item is indicated by the parenthetical entry (insert applicable physical security classification abbreviation, e.g., Phy Sec Cl (C) - Confidential, Phy Sec Cl (S) - Secret, Phy Sec Cl (T) - Top Secret).

(3) Items that are included in kits and sets are listed below the name of the kit or set.

(4) Spare/repair parts that make up an assembled item are listed immediately following the assembled item line entry.

(5) National stock numbers for bulk materials are referenced in the description column in the line item entry for the item to be manufactured/fabricated.

(6) When the part to be used differs between serial numbers of the same model, the effective serial numbers are shown as the last line of the description.

(7) The USABLE ON CODE, when applicable (see paragraph 4, Special Information).

(8) In the Special Tools List section, the Basis Of Issue (BOI) appears as the last line(s) in the entry for each special tool, special TMDE, and other special support equipment. When density of equipments supported exceeds density spread indicated in the basis of issue, the total authorization is increased proportionately.

g. U/M (column (7)). The Unit of Measure (U/M) indicates the measure (e.g., foot, gallon, pound) *or* count (e.g., each, dozen, gross) of a listed item. A two-character alpha code (e.g., FT, GL LB, EA, DZ, GR) appears in this column to indicate the measure or count. If the U/M code appearing in this column differs from the Unit of Issue (U/I) code listed in the Army Master Data File (AMDF), request the lowest U/I that will satisfy your needs.

h. QTY INC IN UNIT (Column (8)). The Quantity Incorporated in Unit (QTY INC IN UNIT) indicates the quantity of the item used in the breakout shown on the illustration figure, which is prepared for a functional group, subfunctional group, or an assembly. A "V" appearing in this column in lieu of a quantity indicates that no specific quantity is applicable (e.g., shims, spacers).

#### 4. SPECIAL INFORMATION.

a. Bulk materials required to manufacture items are listed in the Bulk Material Group of this manual. National stock numbers for bulk materials are also referenced in the description column of the line item entry for the item to be manufactured/fabricated. Detailed manufacturing instructions for items source coded to be manufactured or fabricated are found in TM 9-4935-453-14-1.

b. Detailed assembly instructions for items source coded to be assembled from component spare/repair parts are found in TM 9-4935-453-14-1. Items that make up the assembly are listed immediately following the assembled item entry.

c. Items which have the word BULK in the figure number column will have an index number shown in the item number column. This index number is furnished for use as a cross-reference between the National Stock Number/Part Number Index and the bulk material list in Section II.

d. The following publication(s) pertain to Shop Equipment, GM, CSS, BFV components:

##### Publication and Short Title

TM 9-4935-453-14-1 Operator, *Org*, DS and GS Maintenance Manual

e. For requisitioning miscellaneous consumable maintenance supplies or expendable supplies, use CTA 50-970.



f. National stock numbers (NSN) that are missing for "p" source coded items have been applied for and will be added to this manual by a change/revision when they are entered in the Army Master Data File (AMDF). Until the NSN'S are established and published, submit exception requisitions to: commander, US Army Missile Command, ATTN: DRSM-SS, Redstone Arsenal, Alabama 35898.

5. How to Locate Repair Parts.

a. When National Stock Number or Part Number is Not Known:

(1) First. Using the table of contents, determine the functional group or subfunctional group to which the item belongs. This is necessary since figures are prepared for functional groups and subfunctional groups, and listings are divided into the same groups.

(p) Second. Find the figure covering the functional group or subfunctional group to which the item belongs.

(3) Third. Identify the item on the figure and note the item number of the item.

(4) Fourth. Refer to the Repair Parts List for the figure to find the line item entry for the item number noted on the figure.

b. When National Stock Number or Part Number is Known:

(1) First. Using the Index of National Stock Numbers and Part Numbers, find the pertinent National stock number or part number. The NSN index is in National Item Identification Number (NIIN)\* sequence. The part numbers in the Part Number index are listed in ascending alphanumeric sequence. Both indexes cross-reference you to the illustration figure and item number of the item you are looking for.

\*The NIIN consists of the last 9 digits of the NSN (i.e.  $\frac{5305-01-674-1467}{\text{NSN}}$  ).  
NIIN

(p) Second. After finding the figure and item number, verify that the item is the one you're looking for, then locate the item number in the repair parts list for the figure.

60 Abbreviations. Not applicable.

SECTION II					REPAIR PARTS LIST	TM 9-4935-453-24P
(1)	(2)	(3)	(4)	(5)	(6)	(7) (8)
ILLUSTRATION					DESCRIPTION	QTY
(a)	(b)	NATIONAL				INC
FIG	ITEM	SMR	STOCK	PART		IN
NO.	NO.	CODE	NUMBER	FSCM	NUMBER	USABLE
						U/M
						UNIT

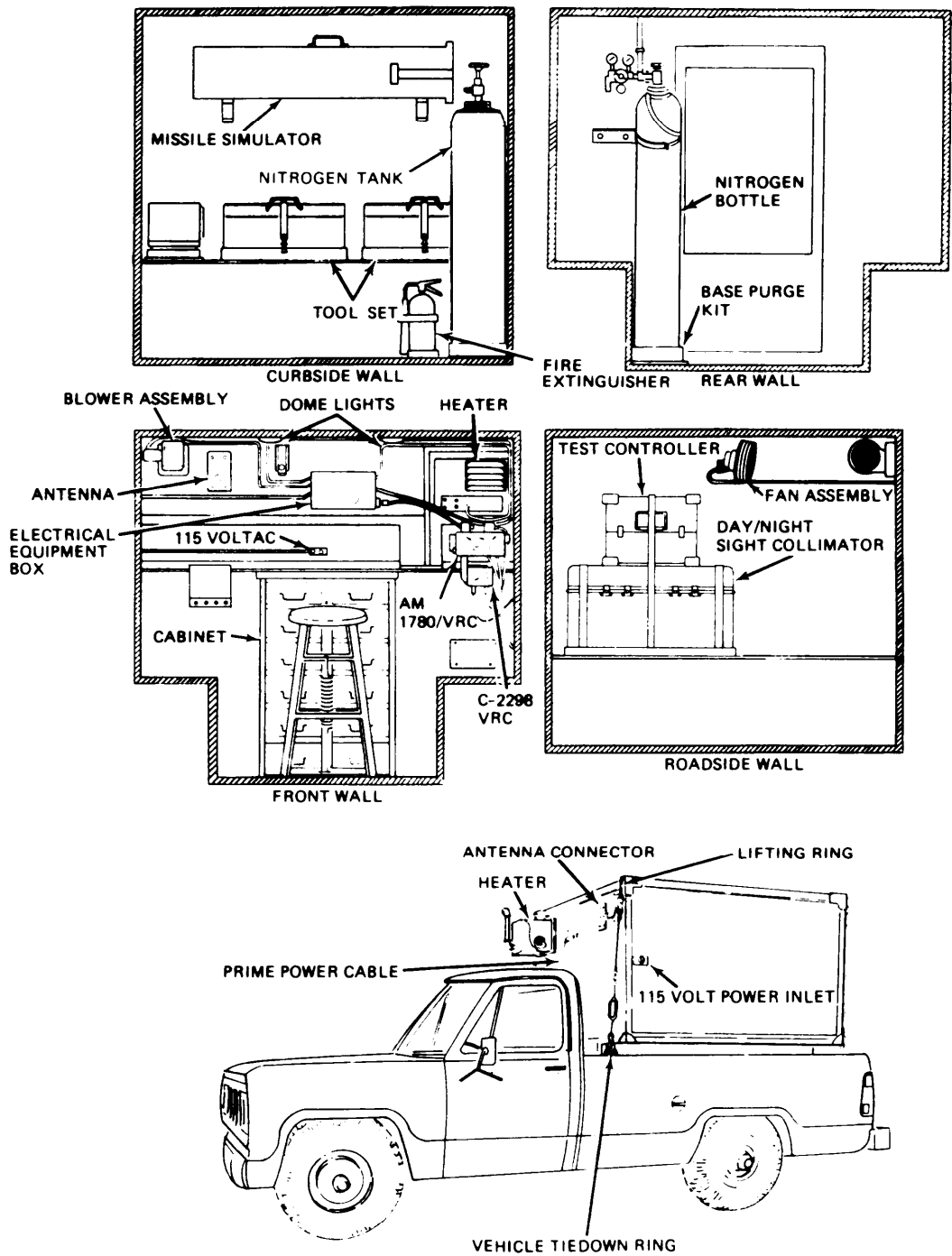
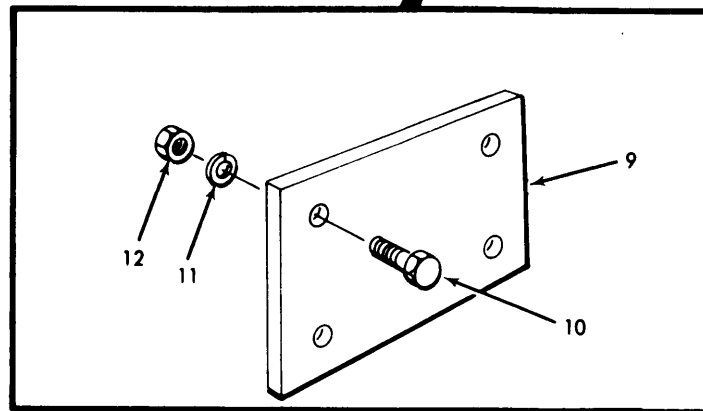
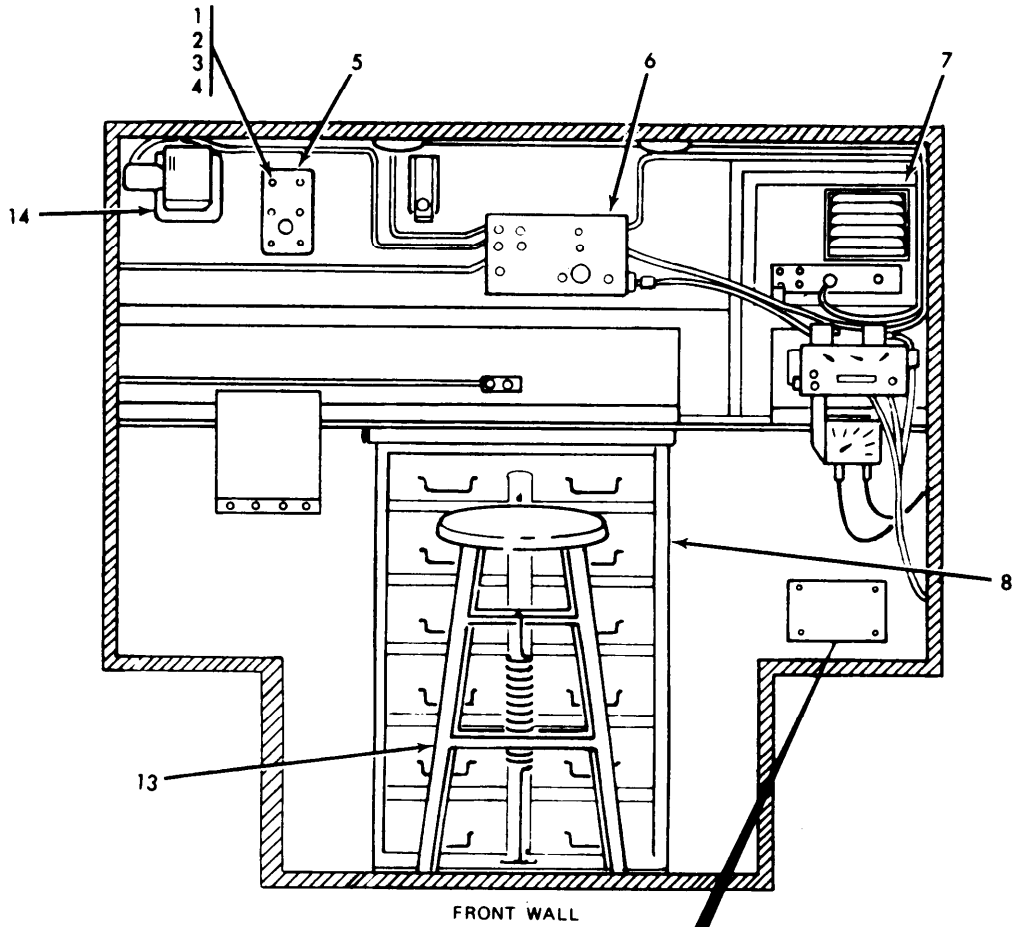
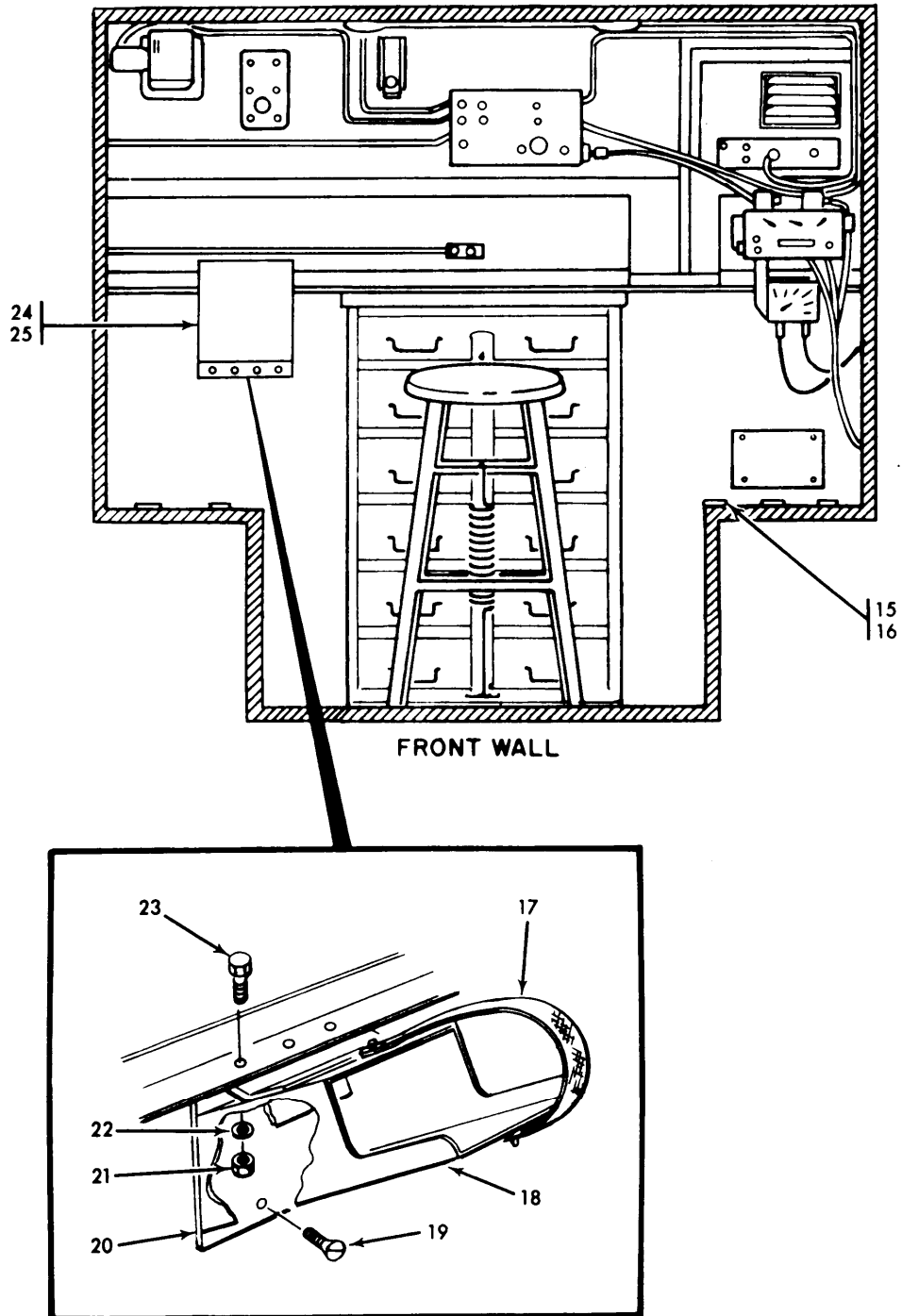


Figure 1. Shop Equipment, Contact Support Set. Fighting Vehicle System (11508963) (Group 0010) (Sheet 1 of 11)



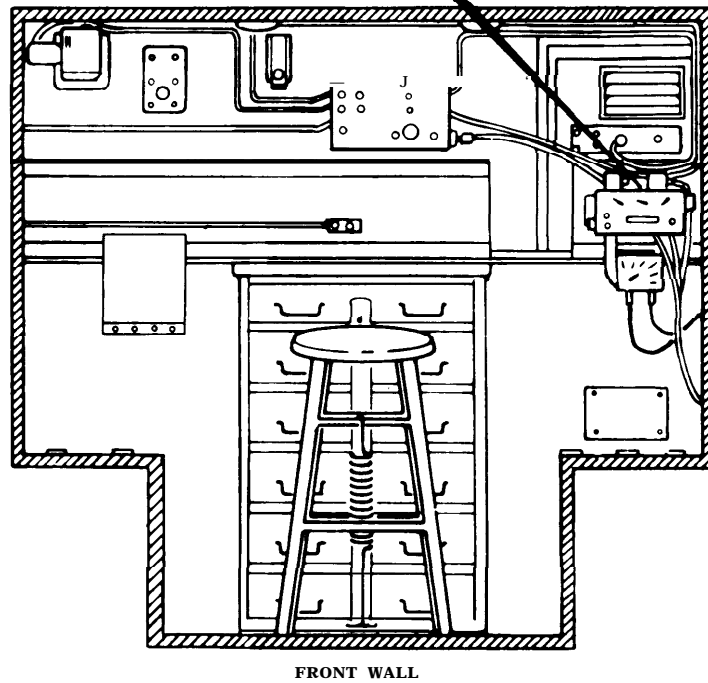
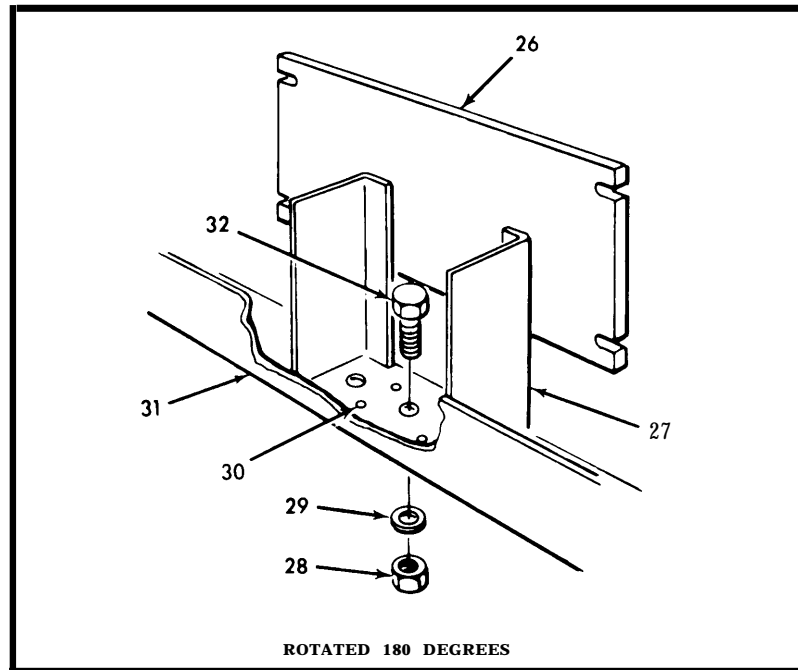
MS 424476

Figure 1. Shop Equipment, Contact Support Set, Fighting Vehicle System (11508963) (Group 0010) (Sheet 2 of 11)



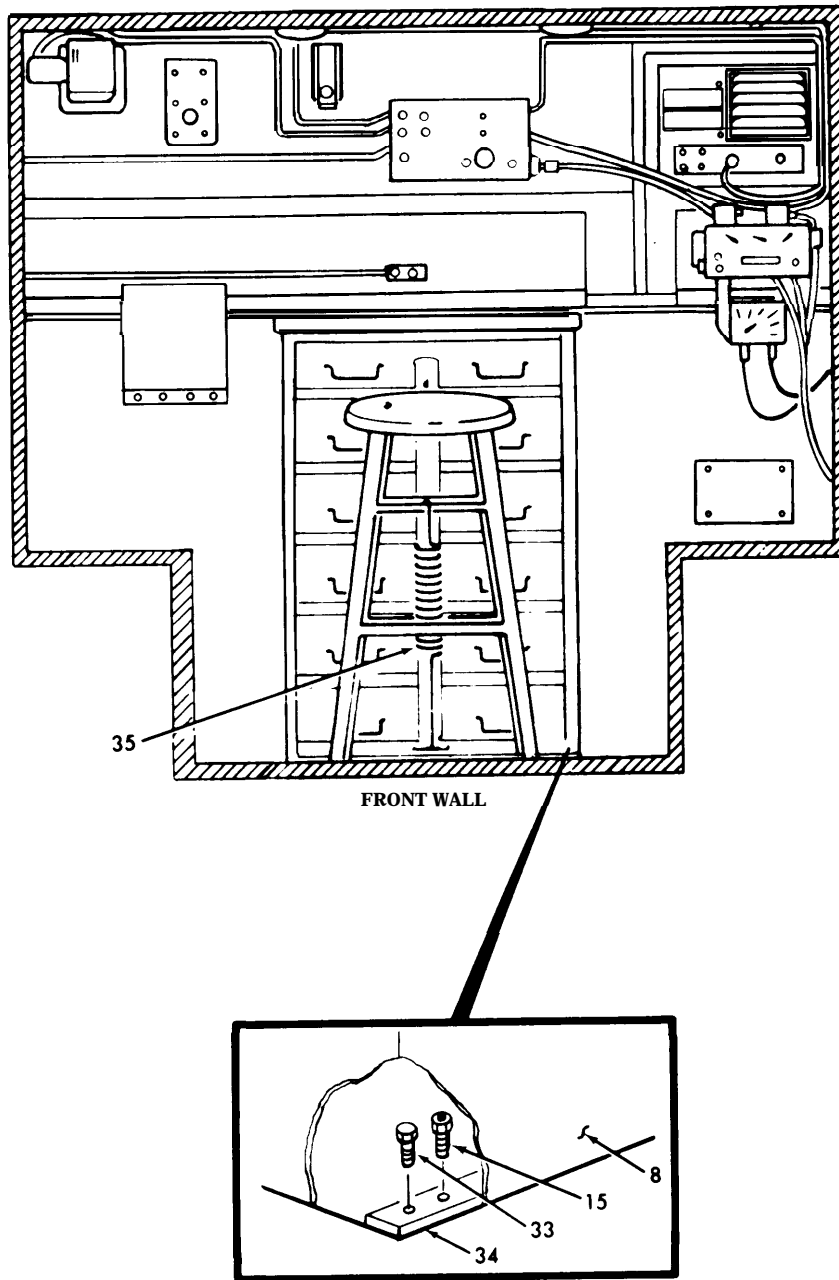
MS 424477

Figure 1. Shop Equipment, Contact Support Set, Fighting Vehicle System (11508963) (Group 0010) (Sheet 3 of 11)



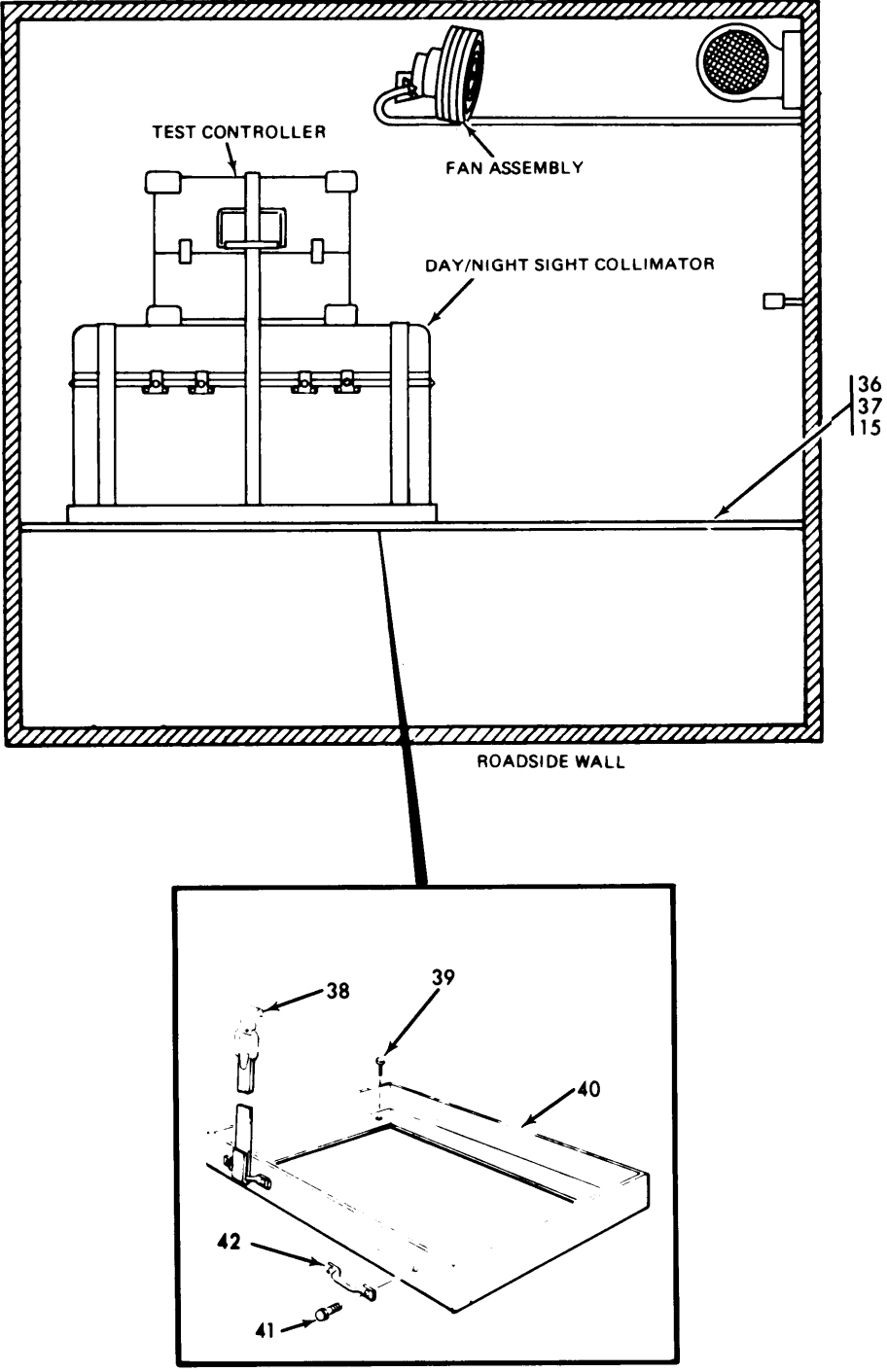
MS 424478

Figure 1. Shop Equipment, Contact Support Set, Fighting Vehicle System (11508963) (Group 0010) (Sheet 4 of 11)



MS 424479

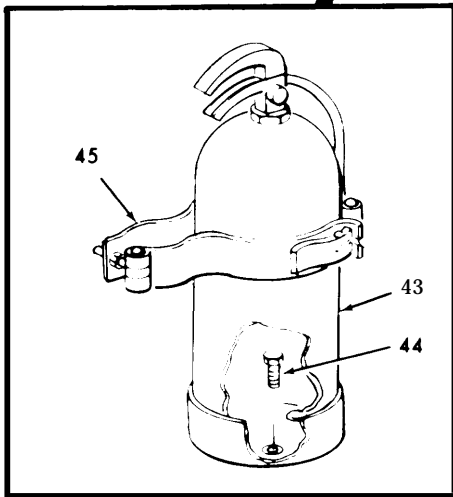
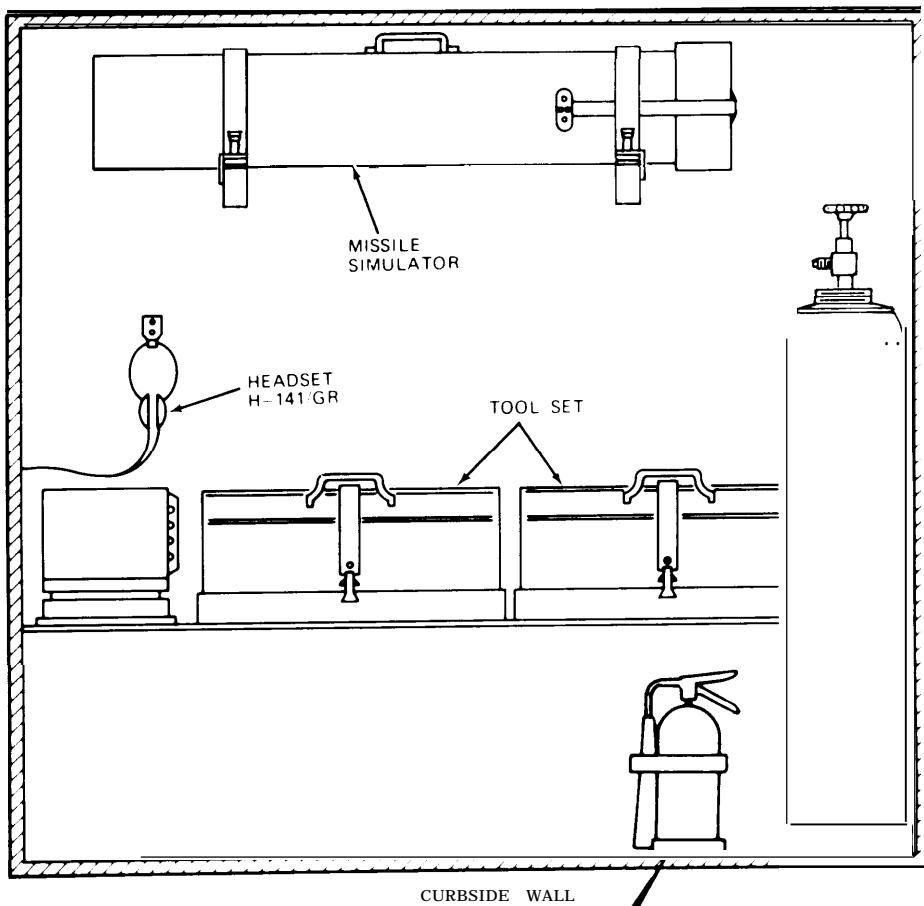
Figure 1. Shop Equipment, Contact Support Set, Fighting Vehicle System  
(1 1508963) (Group 0010) (Sheet 5 of 11)



MS 424481

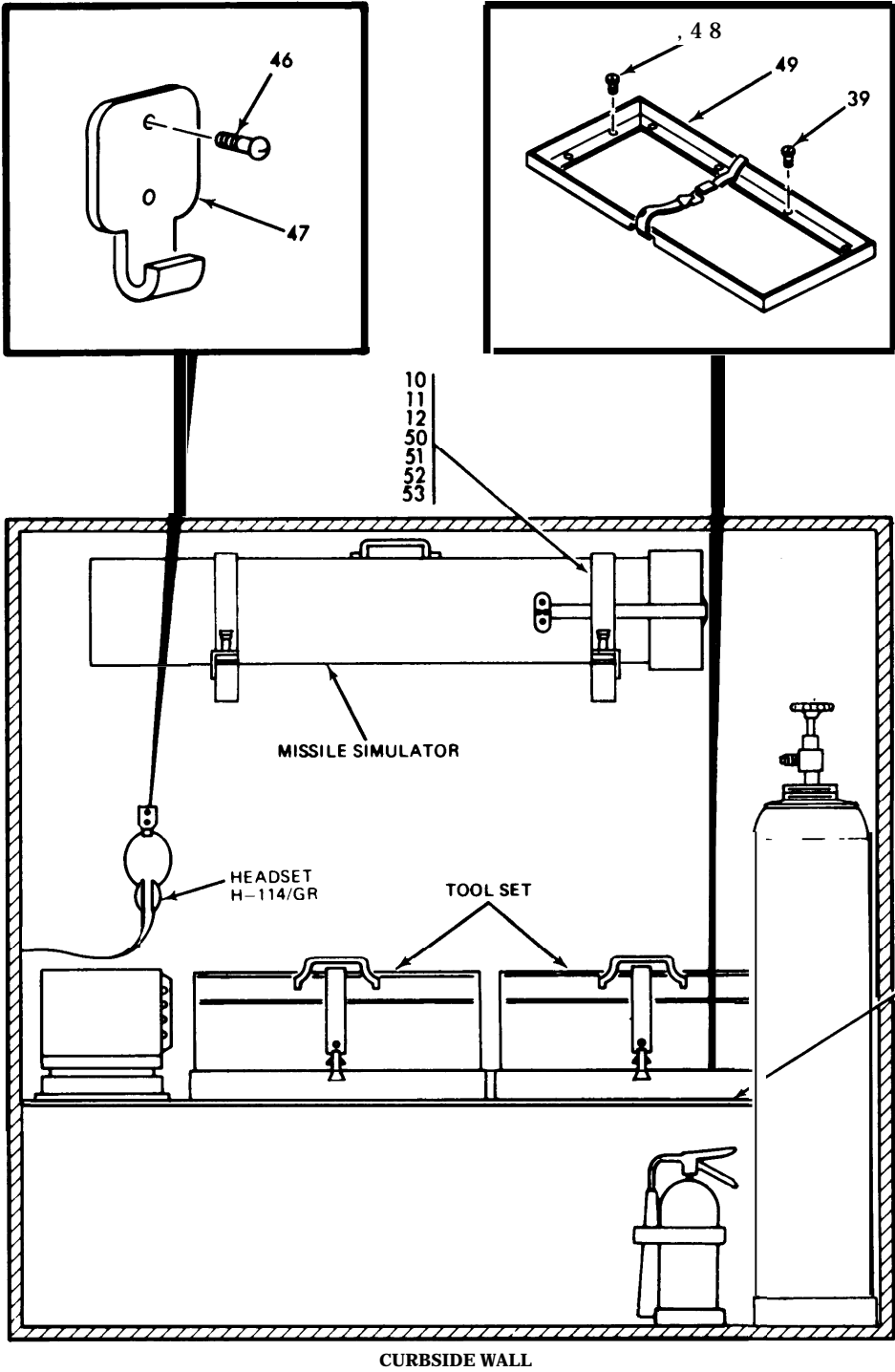
Figure 1. Shop Equipment, Contact Support Set, Fighting Vehicle System (1 1508963) (Group 0010) (Sheet 6 of 11)





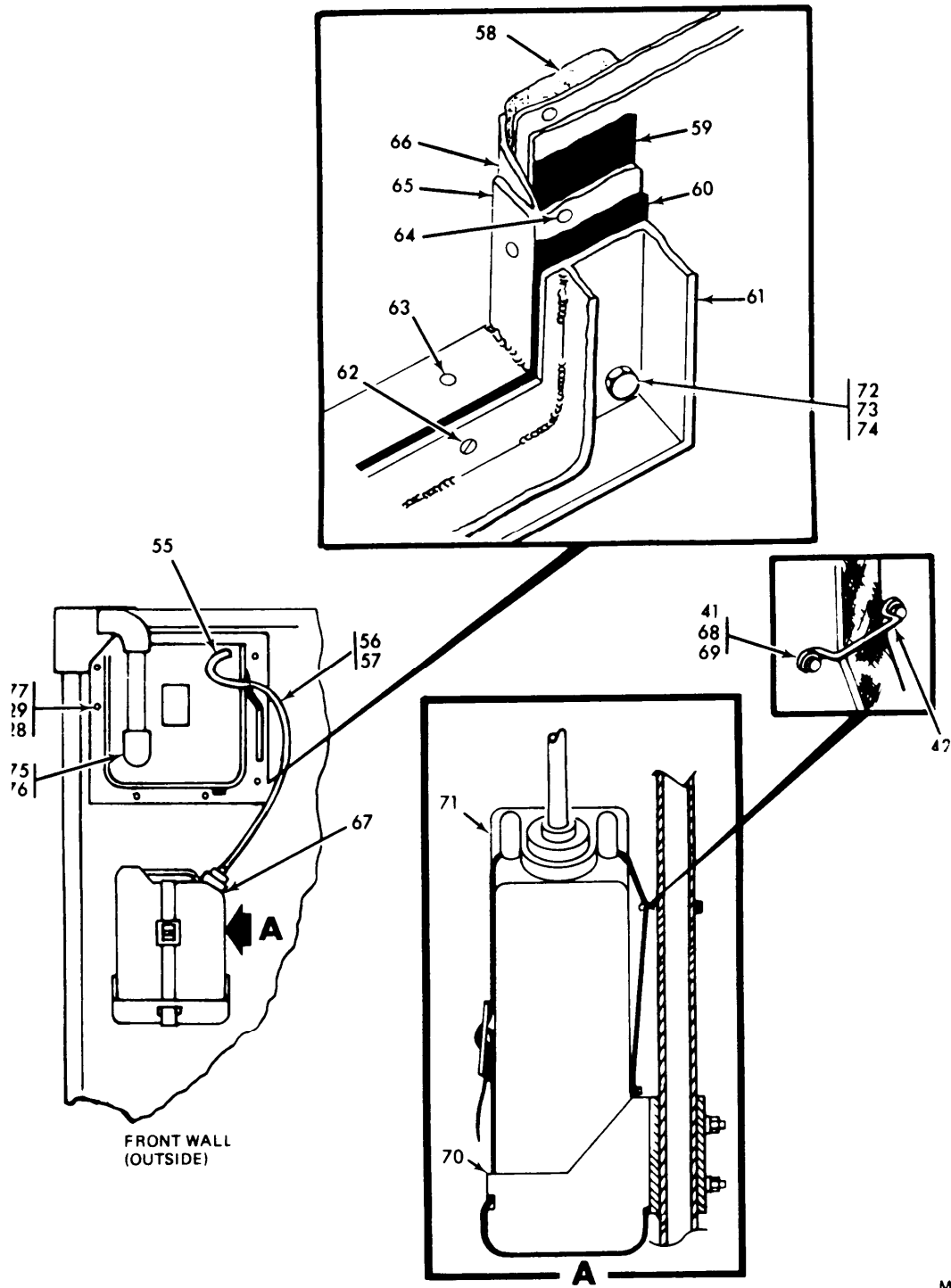
MS424482

Figure 1. Shop Equipment Guided Missile System (11508963) (Group 0010) (Sheet 7 of 11)



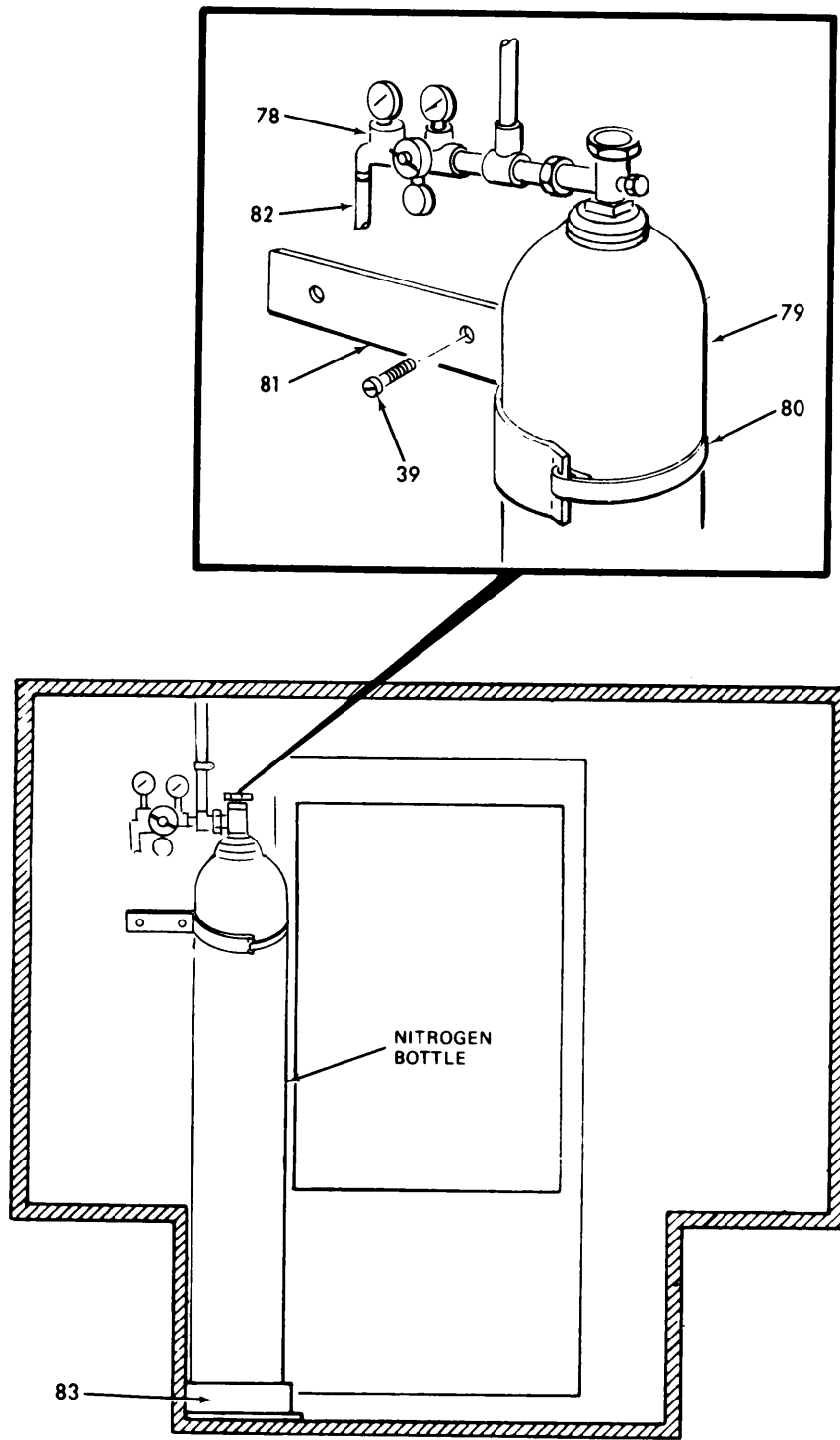
MS 424483

Figure 1. Shop Equipment, Contact Support Set, Fighting Vehicle System (11508963){Group OO10} (Sheet 8 of 11)



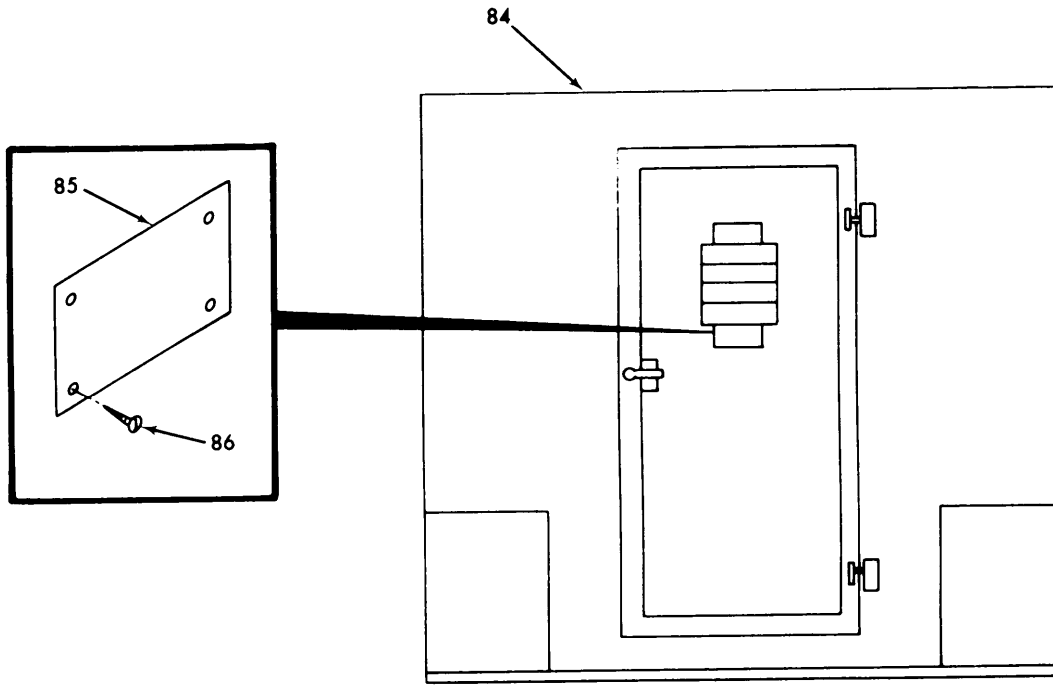
MS 424484

Figure 1. Shop Equipment, Contact Support Set, Fighting Vehicle System  
(1 1508963) (Group 0010) Sheet 9 of 11 )



MS 424485

Figure]. Shop Equipment, Contact Support Set, Fighting Vehicle System (11508963) (Group 0010) (Sheet 10 of 11)



MS424486

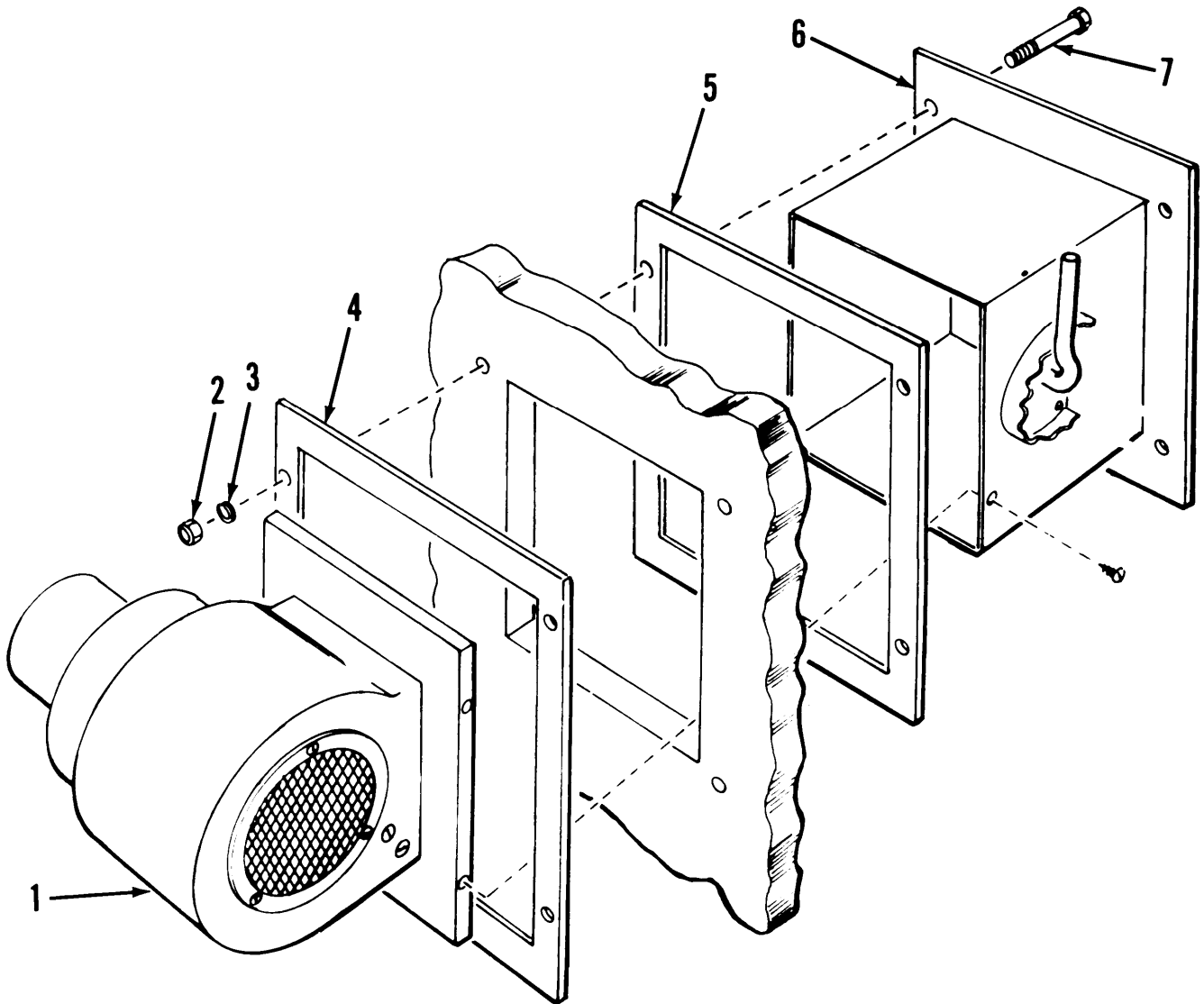
Figure 1. Shop Equipment, Contact Support Set, Fighting Vehicle System (11508963) (Group 0010) (Sheet 11 of 11)

SECTION II					TM 9-4935-453-24P		
(1)	(2)	(3)	(4)	(5)	(6)	(7)	(8)
ILLUSTRATION					DESCRIPTION		QTY
(a) (b)		NATIONAL		PART			INC
FIG ITEM	SMR	STOCK	FSCM	NUMBER	USABLE ON CODE	U/M	IN
NO. NO.	CODE	NUMBER			GROUP 0110		UNIT
					SHOP EQUIP. CONTACT SPT SET, FIGHTING VEH SYS		
					BOLT, MACHINE		
1	1	PAFZZ 5306-00-727-4578	96906	MS35307-339		EA	6
1	2	PAFZZ 5310-00-087-7493	96906	MS27183-13	WASHER, FLAT	EA	6
1	3	PAFZZ 5310-00-974-6623	96906	MS35338-140	WASHER, LOCK SPLIT, CCRR-RES-S, PASS-FIN. , 0.328 ID, 0.586 CD, 0.078 THK	EA	6
1	4	PAFZZ 5310-00-989-5953	96906	MS35691-11	NUT, PLAIN, HEXAGON	EA	6
1	5	PAFZZ 4935-01-028-1334	18876	8035710	PLATE, ANTENNA	EA	1
1	6	XDFFF	18876	10698124	EQUIPMENT, ELECTRICAL (FOR PARTS SEE FG 0040)	EA	1
1	7	PAFHH 4520-01-010-4059	92878	UH48CTYPEIV	HEATER, SPACE	EA	1
1	8	PAFZZ 7125-00-330-0130	81349	MILC40009TYPE5	CABINET, STORAGE	EA	1
1	9	PAFZZ 4935-01-028-5447	18876	8035713	PLATE, REINFORCEMENT	EA	2
1	10	PAFZZ 5305-00-543-2866	96906	MS90728-68	SCREW, CAP, HEXAGON H	EA	8
1	11	PAFZZ 5310-00-080-6004	96906	MS15795-214	WASHER, FLAT	EA	12
1	12	PAFZZ 5310-00-087-4652	96906	MS51922-17	NUT, SELF-LOCKING, HE S, CD-PLTC FIN. , 3/8-1ELNC-28, 9/16 W ACROSS FLATS, 21/64 THK	EA	8
1	13	PAFZZ 7110-00-634-9618	81348	AAS7COTY1SIZE2	STOOL, STRAIGHT	EA	1
1	14	XDFFF	18876	10698115	BLOWER ASSEMBLY (FOR PARTS SEE FG 0020)	EA	1
1	15	PAFZZ 5305-00-978-9392	96906	MS16997-97	SCREW, CAP, SOCKET HE	EA	56
1	16	XDFZZ	18876	8035717	BAR, RADIO MOUNT	EA	1
1	17	PAFZZ 5340-01-030-1520	18876	11508545	STRAP, WEBBING	EA	1
1	18	PAFFF 4935-01-028-5445	18876	8035997	BRACKET, MULTIMETER	EA	1
1	19	PAFZZ 5305-00-432-4202	96906	MS51861-46	SCREW, TAPPING, THREA	EA	4
1	20	XDFZZ	18876	11508996	PLATE, REINFORCE	EA	1
1	21	PAFZZ 5310-00-834-8736	96906	MS35691-2	NUT, PLAIN, HEXAGON	EA	4
1	22	PAFZZ 5310-00-582-5965	96906	MS35338-44	WASHER, LOCK SPLIT, MED, CARB-S, CD-PLTD. , 0.267 ID, 0.493 OD, 0.072 THK	EA	3
1	23	PAFZZ 5305-00-702-4523	96906	MS35307-306	SCREW, CAP, HEXAGON H	EA	3
1	24	PAFFF 6625-00-210-7584	18876	11508854	MULTIMETER, DIGITAL	EA	1
1	25	PAFZZ 6140-00-883-2055	42451	CH1-2	BATTERY, STORAGE	EA	11
1	26	PAFZZ 4935-01-028-5449	18876	8035718	PLATE	EA	1
1	27	PAFZZ 4935-01-030-1443	18876	8035724	BRACKET ASSEMBLY	EA	1
1	28	PAFZZ 5310-00-088-1251	96906	MS51922-1	NUT, SELF-LOCKING, HE S, CD-PLTC W/CHROMATE FIN. , 1/4-20UNC-2A, 0.226 H	EA	15
1	29	PAFZZ 5310-00-823-8804	96906	MS27183-9	WASHER, FLAT	EA	3
1	30	PAHZZ 5320-00-582-3499	96906	MS20600AD6W6	RIVET, BLIND UNIV HD, AL, ANODIZED FIN. MECHANICALLY EXPANDED, 0.375 DIA. 0.527 LG	EA	9
1	31	PAFZZ 4935-01-168-1003	18876	11509046	BAR, CABINET HOLD DO	EA	1

SECTION II		TM 9-4935-453-24P						
(1)	(2)	(3)	(4)	(5)	(6)	(7)	(8)	
ILLUSTRATION					DESCRIPTION		QTY	
(a) (b)		NATIONAL		PART			INC	
FIG ITEM	SMR	STOCK		NUMBER	USABLE ON CODE		IN	
NO. NO.	CODE	NUMBER	FSCM	NUMBER		U/M	UNIT	
1 32	PAFZZ	5306-00-225-8496	96906	MS90725-31	BOLT,MACHINE	EA	3	
1 33	PAFZZ	5305-00-068-0500	96906	MS90725-3	SCREW,CAP,HEXAGON H S,CD-PLTD W/CHROMATE FINE.,1/4-200UNC-2AX 1/2	EA	8	
1 34	PAFZZ	4935-01-030-1444	18876	10698117	BAR,CABINET TIE-DOW	EA	2	
1 35	XDFZZ		19207	8674606	SPRING	EA	1	
1 36	XDFZZ		18876	11508997	BAR,MOUNTING LS	EA	2	
1 37	PAFZZ	5310-00-637-9541	96906	MS35338-46	WASHER, LOCK	EA	20	
1 38	PAFZZ	5340-01-130-6020	18876	10190635-10	STRAP,WEBBING	EA	2	
1 39	PAFZZ	5305-00-958-5257	96906	MS35190-315	SCREW,MACHINE	EA	16	
1 40	XDFZZ		18876	11508993	RACK ASSY,D/N SIGHT	EA	1	
1 41	PAFZZ	5305-00-059-8463	80205	NAS1100C3-32	SCREW,MACHINE	EA	2	
1 42	PAFZZ	5340-00-916-6539	96906	MS51939-2	LOOP,STRAP FASTENER	EA	1	
1 43	PAFZZ	4210-00-202-7858	01317	CS4210-0007AELH	EXTINGUISHER,FIRE,C	EA	1	
1 44	PAFZZ	5305-00-978-9394	96906	MS16997-99	SCREW,CAP, SOCKET HE	EA	8	
1 45	PAFZZ	4210-00-950-3188	94990	3825D3859	BRACKET,FIRE EXTING	EA	1	
1 46	PAFZZ	5305-00-432-4252	96906	MS51861-66	SCREW,TAPPING,THREA	EA	2	
1 47	XDFZZ	5820-00-537-7988	80063	SCA5276	INSTALLATION KIT	EA	1	
1 48	PAFZZ	5305-00-958-5258	96906	MS35190-317	SCREW,MACHINE	EA	18	
1 49	XDFZZ		18876	10698119	RACK,TOOL BOOX	EA	2	
1 50	XDFZZ		18876	11508994	BRACKET ASSY	EA	1	
1 51	XDFZZ		18876	11509056	CRADLE ASSEMBLY	EA	2	
1 52	XDFZZ		18876	11509008	PAD	EA	1	
1 53	PAFZZ	2540-01-107-3382	19207	10190635-9	STRAP,WEBBING	EA	4	
1 54	XDFZZ		18876	11508998	BAR,MOUNTING RS	EA	2	
1 55	PAFZZ	5340-00-291-5348	96906	MS21919WG8	CLAMP,LOOP	EA	1	
1 56	PAFZZ	4720-00-629-3238	81349	MILH13444TYPE1	HOSE,NONMETALLIC	EA	4	
1 57	PAFZZ	5340-00-526-3262	88044	AN742H8	CLAMP,LOOP	EA	2	
1 58	PAFZZ	5330-01-033-9404	18876	8035726	GASKET	EA	1	
1 59	PAFZZ	5330-01-033-9403	18876	8035725	GASKET	EA	1	
1 60	PAFZZ	5330-01-028-5406	18876	8035727	GASKET	EA	1	
1 61	XDFZZ		18876	8035721	FRAME	EA	1	
1 62	PAFZZ	5305-00-958-5473	96906	MS35190-251	SCREW,MACHINE CROSS RECESS FL-CK-HD,S,CD-PLTD W/CHROMATE FIN.,NC. 8-32NC-2AX 0.375	EA	6	
1 63	PAFZZ	5320-01-034-2844	81349	M24243/1-A604	RIVET,BLIND	EA	28	
1 64	PAFZZ	5320-01-034-2845	81349	M24243/5-A604	RIVET,BLIND	EA	16	
1 65	PAFZZ	4935-01-030-1439	18876	8035723	FRAME,HEATER	EA	1	
1 66	XDFZZ		18876	8035722	FRAME,HEATER	EA	1	
1 67	PAFZZ	7240-00-360-0094	81349	MILA10957	ADAPTER KIT,GRAVITY	EA	1	
1 68	PAFZZ	5310-00-934-9751	96906	MS35650-302	NUT,PLAIN,HEXAGON	EA	2	
1 69	PAFZZ	5310-00-167-0801	88044	AN960C10	WASHER, FLAT CORR-RES-S,PASS-FIN.,13/64 ID,7/16 OD,1/16 THK	EA	2	
1 70	PAFZZ	2590-00-473-6331	96906	MS53052	BRACKET ASSEMBLY	EA	1	

SECTION II					TM 9-4935-453-24P			
(1)	(2)	(3)	(4)	(5)	(6)	(7)	(8)	
ILLUSTRATION					DESCRIPTION		QTY	
(a)	(b)	NATIONAL		PART			INC	
FIG	ITEM	SMR	STOCK				IN	
NO.	NO.	CODE	NUMBER	FSCM	NUMBER	USABLE ON CODE	U/M	UNIT
1	71	PAFZZ	7240-00-222-3088	81349	MILC1283-5GAL	CAN,GASOLINE,MILITA	EA	1
1	72	PAFZZ	5305-00-719-5184	96906	MS90727-109	SCREW,CAP,HEXAGON H	EA	4
1	73	PAFZZ	5310-00-584-5272	96906	MS35338-48	WASHER,LOCK	EA	4
1	74	PAFZZ	5310-00-809-5998	96906	MS27183-18	WASHER,FLAT	EA	2
1	75	PAFZZ	4730-00-221-3928	81348	WWP521TY2-1.25	ELBOW,PIPE	EA	2
1	76	PAFZZ	4710-01-040-4024	96906	MS14301G7ZP0110	PIPE,METALLIC	EA	1
1	77	PAFZZ	5305-00-071-2513	96906	MS90728-16	SCREW,CAP,HEXAGON H	EA	18
1	78	PAFZZ	4820-00-001-7749	18876	11508529	VALVE,REGULATING,FL	EA	1
1	79	PAFZZ	8120-00-159-5062	96906	MS39224-7	CYLINDER,COMPRESSED	EA	1
1	80	PAFZZ	5340-00-543-3321	19207	8690474	STRAP,WEBBING	EA	1
1	81	PAFFF	4935-01-170-0851	18876	11509078	SUPPORT ASSEMBLY	EA	1
1	82	PAFZZ	4720-00-561-0713	19200	8572414	HOSE ASSEMBLY,NCNME	EA	1
1	83	PAFZZ	4935-01-028-1331	18876	8035996	BASE,PURGE KIT	EA	1
1	84	XDFDD		81439	MILS55541	SHELTER	EA	1
1	85	XDFZZ		18876	11509007	PLATE,IDENTIFICATIO	EA	1
1	86	PAFZZ	5305-00-854-9351	96906	MS24630-23	SCREW,TAPPING,THREA CROSS-RECESS-PAN-HD,CORR-RES-S,PASS-FIN.,NC. 6-32 X 0.375	EA	4

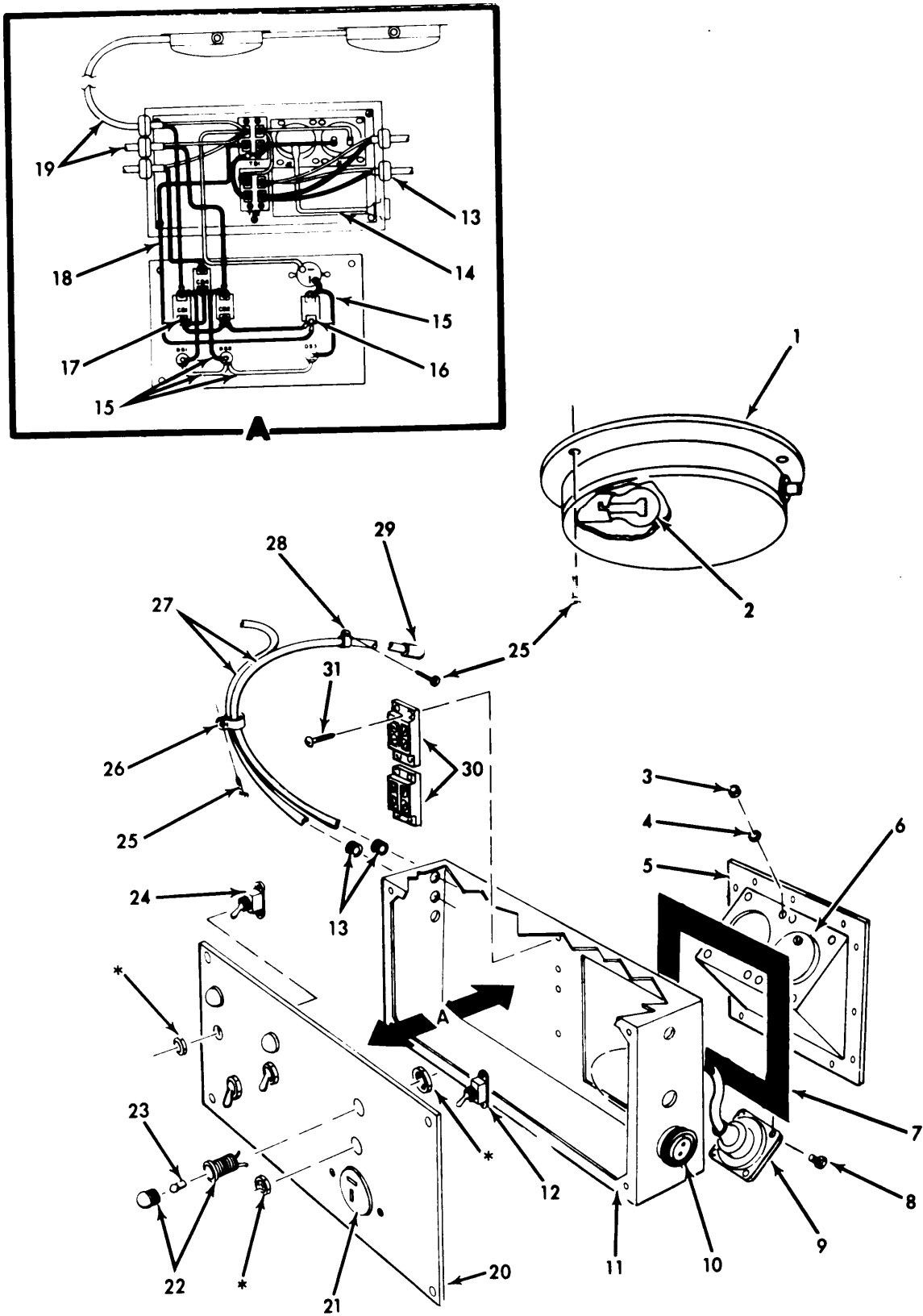




MS424495

Figure 2. Blower Assembly Installation (10698115) (Group 0020)

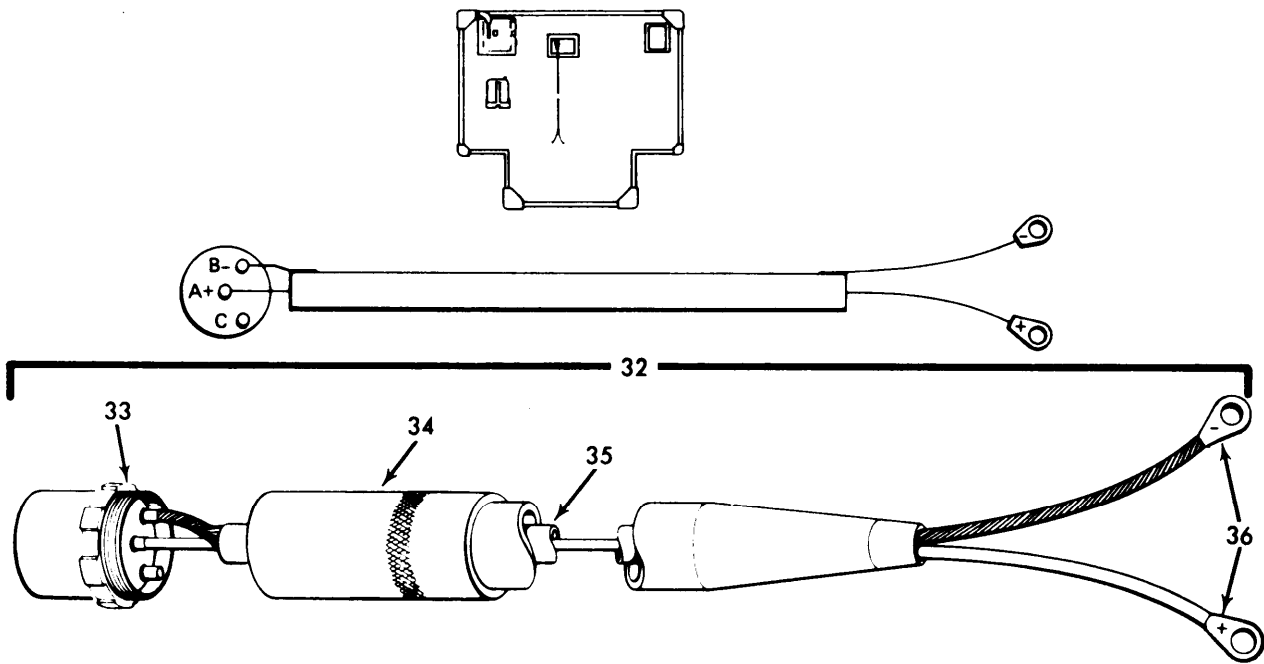
SECTION II		TM 9-4935-453-24P						
(1)	(2)	(3)	(4)	(5)	(6)	(7)	(8)	
ILLUSTRATION		DESCRIPTION					QTY	
(a)	(b)	NATIONAL		PART		INC		
FIG	ITEM	SMR	STOCK	FSCM	NUMBER	USABLE ON CODE	IN	
NO.	NO.	CODE	NUMBER				U/M	UNIT
						GROUP 0020		
						BLOWER ASSEMBLY		
						10698115 (18876)		
2	1	PAFZZ	2590-00-693-4171	19207	7092511	BLOWER ASSEMBLY,EXH	EA	1
2	2	PAFZZ	5310-00-934-9758	96906	MS35649-202	NUT,PLAIN,HEXAGON S,CD-PLTD W/CHROMATE FIN.,NO. 10-24LAC-2B 0.375 W ACROSS FLATS,0.13 H	EA	4
2	3	PAFZZ	5310-00-045-3296	96906	MS35338-43	WASHER,LOCK SPLIT,MED,CARB-S,CD-PLTD FIN.,0.205 ID,0.337 CC 0.053 THK	EA	4
2	4	XDFZZ		18876	10698115-1	PLATE	EA	1
2	5	PAFZZ	5330-00-181-9688	18876	10698115-2	GASKET 5-3/8 W CF APERTURE,6-5/8 CF APERTURE,6-7/8 W,1/8 THK,8 LG (HOLES TO BE DRILLED AT ASSY)	EA	1
2	6	XDFZZ		18876	7092352	DUCT ASSEMBLY	EA	1
2	7	PAFZZ	5305-00-984-6218	96906	MS35206-271	SCREW,MACHINE CROSS-RECESS-PIN-HD,S,CD-PLTD W/CHROMATE FIN., NO. 10-24UNC-2A X 2	EA	4



\* FURNISHED WITH ASSOCIATED ITEM

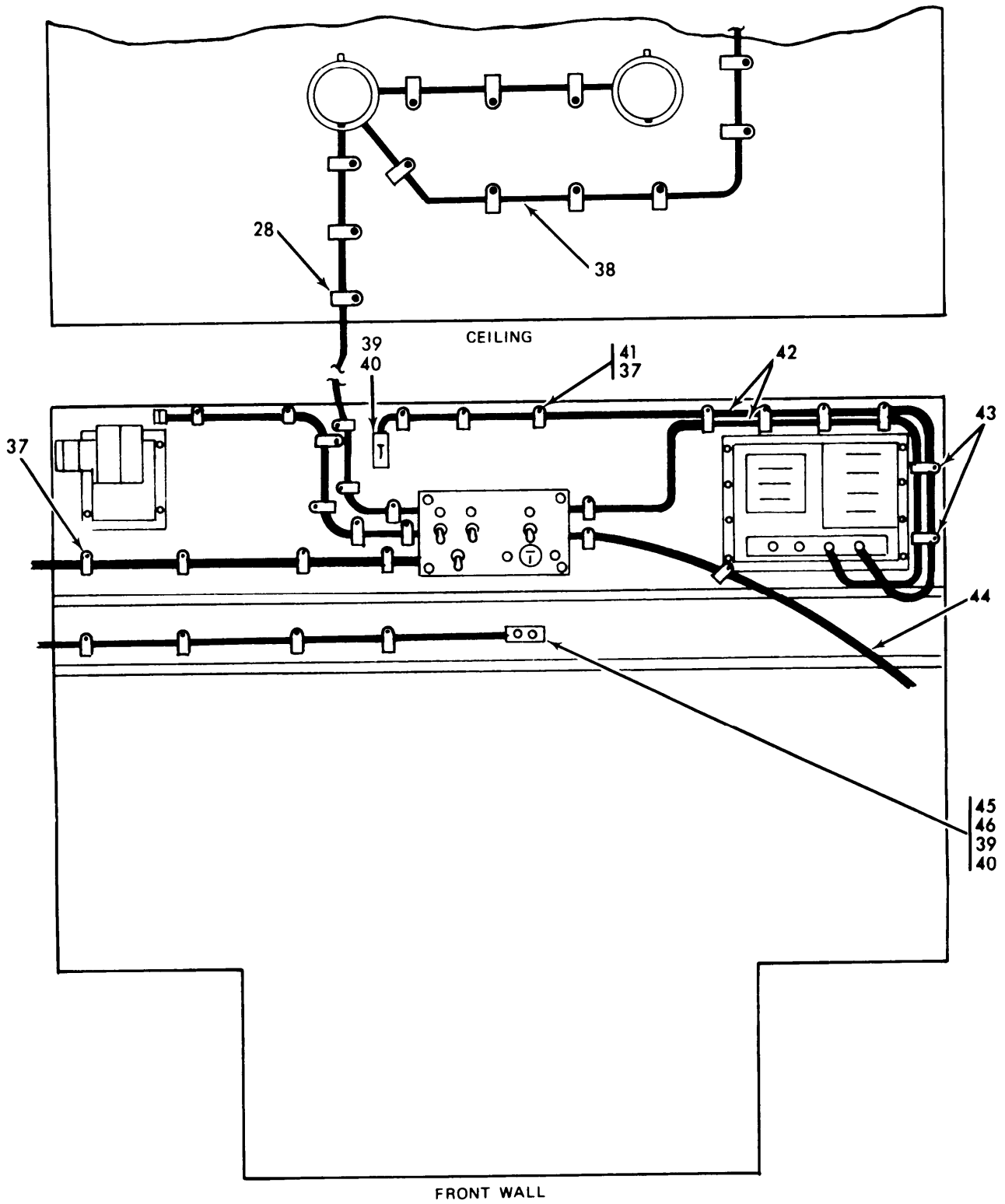
MS 424496

Figure 3. Equipment, Electrical Wiring and Communication  
(10698124) (Group 0040) (Sheet 1 of 6)



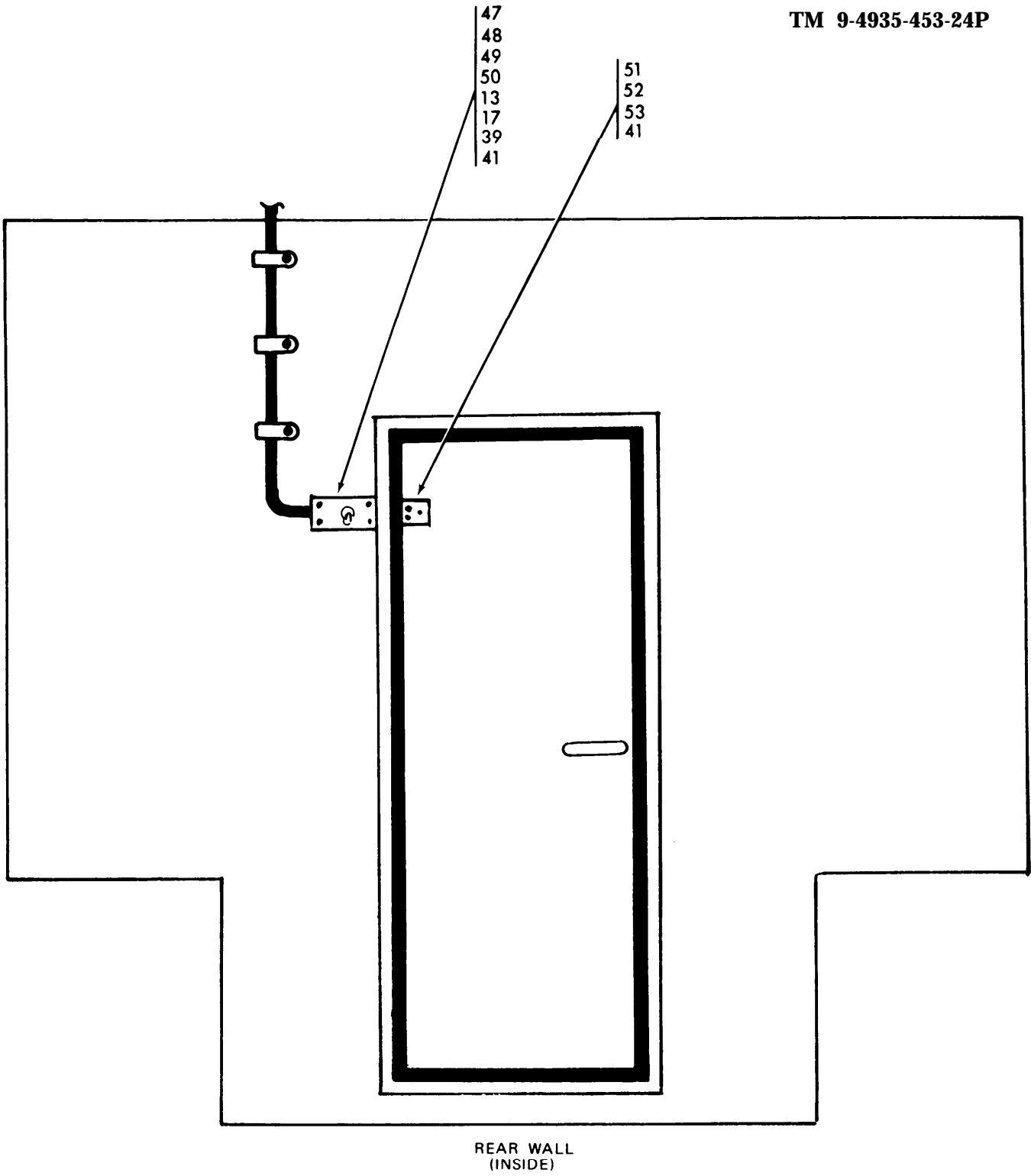
MS 424497

Figure 3. Equipment, Electrical Wiring and Communication  
(10698124) (Group 0040) (Sheet 2 of 6)



MS 424498

Figure 3. Equipment, Electrical Wiring and Communication  
(10698124) (Group 0040) (Sheet 3 of 6)



MS 424499

Figure 3. Equipment, Electrical Wiring and Communication  
(10698124) (Group 0040) (Sheet 4 of 6)

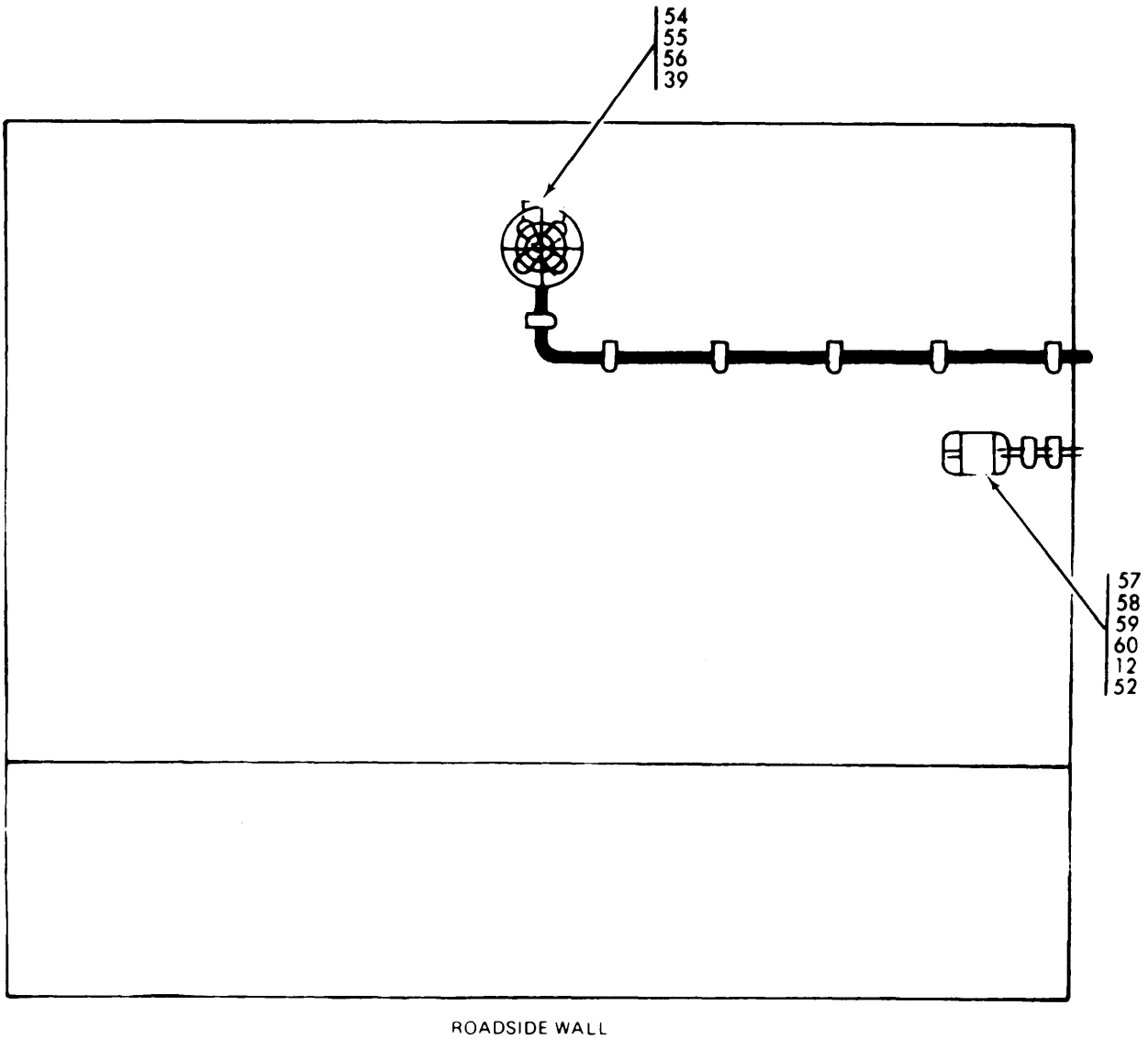
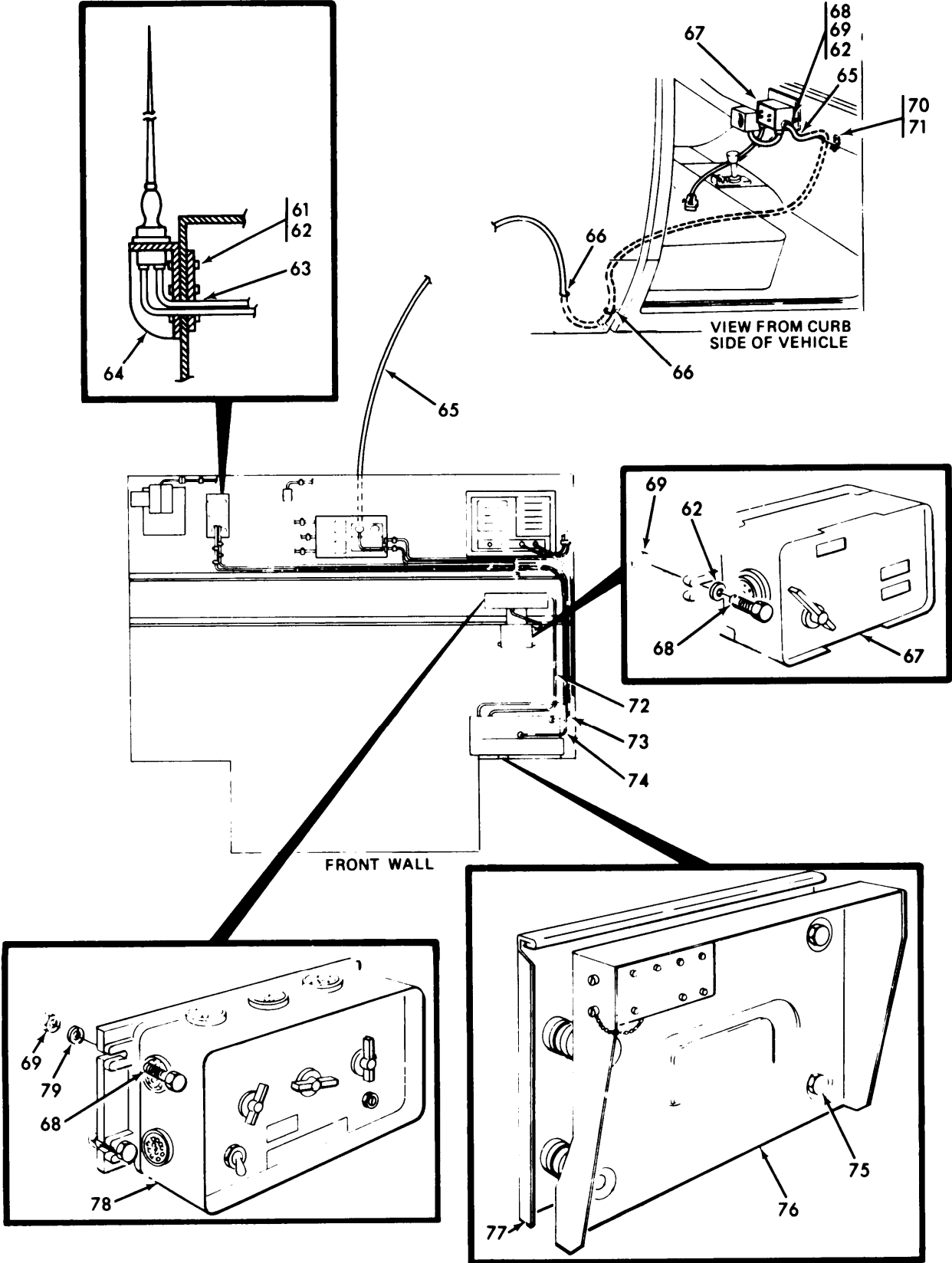


Figure 3. Equipment, Electrical Wiring and Communication  
(10698124) (Group 0040) (Sheet 5 of 6)



MS 424501

Figure 3. Equipment, Electrical Wiring and Communication (10698124) (Group 0040) (Sheet 6 of 6)



SECTION II		TM 9-4935-453-24P						
(1)	(2)	(3)	(4)	(5)	(6)	(7)	(8)	
ILLUSTRATION					DESCRIPTION		QTY	
(a) (b)		NATIONAL		PART			INC	
FIG ITEM	SMR	STOCK		NUMBER			IN	
NO. NO.	CODE	NUMBER	FSCM	NUMBER	USABLE ON CODE	U/M	UNIT	
					GROUP 0040			
					EQUIPMENT, ELECTRICAL			
					10698124 (18876)			
3	1	PAFZZ	6220-01-151-8270	18876	10699527		EA 2	
3	2	PAFZZ	6240-00-044-6914	96906	MS25232-1683		EA 2	
3	3	PAFZZ	5310-00-934-9757	96906	MS35649-282		EA 8	
3	4	PAFZZ	5310-00-596-7693	96906	MS35335-31		EA 8	
					WASHER, LOCK EXT-TEETH, S, CD-PLTD FIN., NO, 8 SCREW SIZE, 0.381 CD, 0.023 THK			
3	5	XDFZZ		18876	1C698124-1		EA 1	
3	6	PAFZZ	4935-01-030-6782	21450	722352		EA 1	
3	7	PAFZZ	5330-01-028-5405	18876	10698124-3		EA 1	
3	8	PAFZZ	5305-00-984-6193	96906	MS35206-245		EA 8	
3	9	PAFZZ	5935-00-839-0675	D1371	MS3102R22-2P		EA 1	
					CONNECTOR, RECEPTACL 3 MALE CONTACTS, POLARIZED, SIGHT SHAPE, 1.625 W, 1.625 LG			
3	10	PAFZZ	5935-00-738-8325	18876	7388325		EA 2	
3	11	XDFZZ		18876	1104C873-3		EA 1	
3	12	PAFZZ	5925-00-842-7299	96906	MS24509-A-35		EA 1	
3	13	PAFZZ	5325-00-276-6098	96906	MS35489-74		EA 3	
3	14	PAFZZ	6145-00-557-0194	81349	HWC16-19J9		FT 1	
3	15	PAFZZ	6145-00-295-2810		MILW16878/4E20WH 81349 T		FT 10	
					WIRE, ELECTRICAL (U/O REF NO. 10698124.)			
3	16	PAFZZ	5940-00-113-8183	96906	MS25036-113		EA 12	
3	17	PAFZZ	5940-00-57-1629	96906	MS25C36-149		EA 9	
					TERMINAL, LUG CCP., TNO FIN., 11/32 W, 29/32 LG			
3	18	PAFZZ	6145-00-295-2815		MILW16878-4TYE10 81349 WH		FT 10	
					WIRE, ELECTRICAL (U/C REF NO. 10698124.1			
3	19	PAFZZ	6145-00-682-9937		MILW16878-4C0-02 81345 LGF2-18-0250		FT 1	
					CABLE, POWER, ELECTRI			
3	20	PAFZZ	4935-01-030-1447	18876	10698124-2		EA 1	
3	21	PAFZZ	4935-00-956-9607	18876	11027100-1		EA 1	
3	22	PAFZZ	6210-00-812-3489	56232	737893-14REVC		EA 3	
3	23	PAFZZ	6240-00-155-7836	96906	MS25237-327		EA 3	
					LAMP, INCANDESCENT 28 V, 0.04 AMP, 1C-21 TUN-FIL, MIDGET FLGD BASE, T-13/4 BULE, CLEAR, WHITE LIGHT, 1,000 HR RATED LIFE, 5/8 LG			
3	24	PAFZZ	5925-00-850-7244	96906	MS24509-A-5		EA 3	
					CIRCUIT BREAKER SPST, 115 TO 200 V AC, 5 AMP, 28 V DC, 5 AMP, S CASE, 0.75 W, 1.375 H, 2.5 LG W/2 SCREW TYPE TERM			
3	25	PAFZZ	5305-00-432-4169	96906	MS51861-14		EA 63	
3	26	PAFZZ	5340-00-598-0455	18876	9975271		EA 4	
3	27	PAFZZ	6145-00-553-6165		JC580S06C-F3-16R 81348 -RJ-0123		EA 10	
					CABLE, POWER, ELECTRI (U/O REF NO. 10698124.1			
3	28	PAFZZ	5340-00-715-1635	18876	9159893		EA 28	
					CLAMP, LOOP AL, W/RU CUSHION, 1/4 LOOP ID, 1/2 W, 0.040 THK			
3	29	PAFZZ	5935-01-021-7420	81348	WC596-10-1		EA 1	
					CONNECTOR, PLUG, ELEC			
3	30	PAFZZ	5940-01-153-8002	89380	CR151A 602		EA 2	
					TERMINAL EOARC			

SECTION II		TM 9-4935-453-24P						
(1)	(2)	(3)	(4)	(5)	(6)	(7)	(8)	
ILLUSTRATION					DESCRIPTION		QTY	
(a)	(b)	NATIONAL		PART			INC	
FIG NO.	ITEM NO.	SMR CODE	STOCK NUMBER	FSCM NUMBER	USABLE ON CODE		IN	
NO.	NO.	CODE	NUMBER	NUMBER		U/M	UNIT	
3	31	PAFZZ	5305-00-854-6690	96906	MS24617-32		EA 42	
3	32	PAFZZ	4935-00-421-7280	18876	10699528	CABLE ASEMBLY,PCWE 2 COND,8 AWG STRANDEC W/168 STRANDS NC. 30 AWG,9 FT LG	EA 1	
3	33	PAFZZ	5935-00-814-5873	96906	MS3106R22-2S	CONNECTOR,PLUG,ELEC 3 FEMALE CONTACTS,POLARIZED,SIGHT SHAPE 1.594 DIA	EA 1	
3	34	XBFZZ		18876	MILI23053-2TYPE2 CIA1000BLK	CABLE	EA 1	
3	35	XBFZZ		18876	MILI23053-2TYPE2 C-02HGF2F8	TUBING,SHRINKABLE	EA V	
3	36	PAFZZ	5940-00-114-1314	96906	MS20659-129	TERMINAL,LUG	EA 2	
3	37	XDDZZ		96906	MS35140-5	CLAMP,WIRE	EA 5	
3	38	PAFZZ	6145-00-682-9937	81349	MILW16878-4C0-02 LGF2-18-0250	CABLE,POWER,ELECTRI	FT 12	
3	39	PAFZZ	5975-00-152-1144	06542	157TY1CL4STYMO-5 00XC-375	BOX CONNECTOR,ELECT	EA 2	
3	40	PAFZZ	5305-00-147-3238	96906	MS51861-45C	SCREW,TAPPING,THREA	EA 13	
3	41	PAFZZ	5305-00-059-8463	80205	NAS1100C3-32	SCREW,MACHINE EA	EA 2	
3	42	PAFZZ	6145-00-548-1225	81348	J-C-580S06CF2/12 SRSJ	CABLE,POWER,ELECTRI (U/O REF NO. 10698124.)	FT 10	
3	43	XDFZZ		19207	7351855	CLAMP,LOOP	EA 2	
3	44	PAFZZ	5995-00-823-2726	80058	CX4720VRC10FT	CABLE ASSEMBLY,POWE	EA 1	
3	45	XDDZZ	5935-01-012-3080	81348	WC596/12-4	CONNECTOR,RECEPTACL	EA 1	
3	46	PAFZZ	5975-00-682-0559	81348	WP455TYPE2	PLATE,WALL,ELECTRIC	EA 1	
3	47	PAFFF	4935-01-028-5450	18876	8035720	BLACKCUT BOX ASSEMB	EA 1	
3	48	XDFZZ		18876	8035720-2	BOX, TOP	EA 1	
3	49	PAFZZ	5305-00-067-9908	96906	MS24622-43	SCREW,TAPPING,THREA	EA 4	
3	50	PAFZZ	5930-00-832-8364	19207	8328364	SWITCH,PUSH-PULL	EA 1	
3	51	XDFZZ	5930-01-028-7131	18876	8035715	BRACKET,ELECTRIAL	EA 1	
3	52	PAFZZ	5310-00-167-0818	88044	AN960-10	WASHER,FLAT	EA 5	
3	53	PAFZZ	5930-00-655-1514	96906	MS35058-22	SWITCH,TOGGLE	EA 1	
3	54	PAFZZ	5306-00-685-7790	96906	MS35751-46	BOLT,SQUARE NECK	EA 4	
3	55	PAFZZ	5310-00-245-3424	96906	MS17829-5C	NUT,SELF-LOCKING,HE	EA 11	
3	56	PAFZZ	4140-00-851-9759	81349	MILF68TYSDB-24CL 1	FAN,CIRCULATING	EA 1	
3	57	PAFZZ	5305-00-891-1780	96906	MS27039-1-36	SCREW,MACHINE	EA 2	
3	58	PAFZZ	5310-00-934-9751	96906	MS35650-302	NUT,PLAIN,HEXAGON S,CD-OR ZN PLTD W/CHROMATE FIN,NO.10-32NF-2B,3/8 W ACROSSPLATS,1/8 THK	EA 2	
3	59	PAFZZ	4935-01-029-0441	18876	8035712	BASE,PLUG	EA 1	
3	60	PAFZZ	4935-01-028-5466	18876	8035714	SHIELD,CONNECTOR	EA 1	
3	61	PAFZZ		96906	MS90725-42	BOLT,MACHINE	EA 7	
3	62	PAFZZ	5310-00-809-3078	96906	MS27183-11	WASHER,FLAT	EA 8	
3	63	PAFZZ	8030-00-682-6745	81349	MILC18255TYPE1-1	CALKING COMPOUND (USE TO SEAL HOLE AFTER CABLE HAVE BEEN INSTALLED FOR BRACKET,SC-L-189023-1 AND MATCHING UNIT,SM-O-542021.)	GL 1	
3	64	PAFZZ	5820-00-875-0920	80063	SCD48664	BRACKET ASSEMBLY	EA 1	
3	65	PAFZZ	5995-00-985-8385	80058	CX7060AVRC6FT	CABLE ASSEMBLY,SPEC	EA 1	

SECTION II					TM 9-4935-453-24P		
(1)	(2)	(3)	(4)	(5)	(6)	(7)	(8)
ILLUSTRATION					DESCRIPTION		QTY
(a)	(b)	NATIONAL		PART			INC
FIG	ITEM	SMR	STOCK	FSCM	NUMBER	USABLE ON CODE	IN
NO.	NO.	CODE	NUMBER				U/M UNIT
3	66	XDFZZ	5325-00-582-3601	96906	MS35489-38	GROMMET, NONMETALLIC	EA 3
3	67	PAFZZ	5830-00-892-3339	80063	SCDL415260	CONTROL, INTERCOMMUN	EA 2
3	68	PAFZZ	5305-00-051-4076	96906	MS90727-34	SCREW, CAP, HEXAGON H S, CD-PLTC W/CHROMATE FIN., 5/16-24UNF-2A X1	EA 8
3	69	PAFZZ	5310-00-891-1752	96906	MS35691-14	NUT, PLAIN, HEXAGON	EA 8
3	70	PAFZZ	5310-00-934-9751	96906	MS35650-302	NUT, PLAIN	EA 2
3	71	PAFZZ	5305-00-497-7401	96906	MS51861-25C	SCREW, TAPPING, THREA	EA 2
3	72	PAFZZ	5995-00-823-2832	80063	SMD415553-4FT	CABLE, ASSEMBLY, SPEC	EA 2
3	73	PAFZZ	5995-00-985-7882	80058	CG1773AU30FT	CABLE, ASSEMBLY, RADI	EA 1
3	74	PAFZZ	5995-00-823-2818	80058	CX4722AVRC10FT	CABLE, ASSEMBLY, SPEC	EA 1
3	75	PAFZZ	5306-00-225-8496	96906	MS90725-31	BOLT, MACHINE	EA 4
3	76	PAFZZ	5820-00-893-1323	80058	MT-1C29()/VRC	MOUNTING	EA 1
3	77	PAFZZ	5820-00-875-0923	80063	SCD48735	MOUNTING BRACKET AS	EA 1
3	78	PAFZZ	5820-00-892-3342	80063	SCDL415275	AMPLIFIER, AUDIO FRE	EA 1
3	79	PAFZZ	5310-00-889-2527	96906	MS45904-72	WASHER, LOCK	EA 8

SECTION II					TM 9-4935-453-24P		
(1)	(2)	(3)	(4)	(5)	(6)	(7)	(8)
ILLUSTRATION					DESCRIPTION	QTY	
(a)	(b)	NATIONAL					INC
FIG	ITEM	SMR	STOCK	PART			IN
NO.	NO.	CODE	NUMBER	FSCM	NUMBER	USABLE ON CODE	U/M UNIT

GROUP 9998

BULK MATERIAL

BULK 1	PCDZZ				MILR5001TY2CLFIR	RUBBER SHEET	SH
				81349	MGRAC.062X36X36		

BULK 2	PCDZZ	9320-00-140-7561			MILR5001TY2CLFIR	RUBBER SHEET,CELLUL	SF
				81349	MGDA 0.500X36X36		

STOCK NUMBER	FIGURE NO.	ITEM NO.	STOCK NUMBER	FIGURE NO.	ITEM NO.
4820-00-001-7749	1	78	5935-00-814-5873	3	33
6240-00-044-6914	3	2	5995-00-823-2726	3	44
5310-00-045-3296	2	3	5995-00-823-2818	3	74
5305-00-051-4076	3	68	5995-00-823-2832	3	72
5305-00-059-8463	1	41	5310-00-823-8804	1	29
5305-00-067-9908	3	49	5930-00-832-8364	3	50
5305-00-068-0500	1	33	5310-00-834-8736	1	21
5305-00-071-2513	1	77	5935-00-839-0675	3	9
5310-00-080-6004	1	11	5925-00-842-7299	3	12
5310-00-087-4652	1	12	5925-00-850-7244	3	24
5310-00-087-7493	1	2	4140-00-851-9759	3	56
5310-00-088-1251	1	28	5305-00-854-6690	3	31
5940-00-113-8183	3	16	5305-00-854-9351	1	86
5940-00-114-1314	3	36	5820-00-875-0920	3	64
9320-00-140-7561	BULK	2	5820-00-875-0923	3	77
5305-00-147-3238	3	40	6140-00-883-2055	1	25
5975-00-152-1144	3	39	5310-00-889-2527	3	79
6240-00-155-7836	3	23	5310-00-891-1752	3	69
8120-00-159-5062	1	79	5305-00-891-1780	3	57
5310-00-167-0801	1	69	5830-00-892-3339	3	67
5330-00-181-9688	2	5	5820-00-892-3342	3	78
4210-00-202-7858	1	43	5820-00-893-1323	3	76
6625-00-210-7584	1	24	5340-00-916-6539	1	42
4730-00-221-3928	1	75	5310-00-934-9751	1	68
7240-00-222-3088	1	71	5310-00-934-9751	3	58
5306-00-225-8496	1	32	5310-00-934-9757	3	3
5306-00-225-8496	3	75	5310-00-934-9758	2	2
5310-00-245-3424	3	55	4210-00-950-3188	1	45
5325-00-276-6098	3	13	4935-00-956-9607	3	21
5340-00-291-5348	1	55	5305-00-958-5257	1	39
6145-00-295-2810	3	15	5305-00-958-5258	1	48
6145-00-295-2815	3	18	5305-00-958-5473	1	62
7125-00-330-0130	1	8	5310-00-974-6623	1	3
7240-00-360-0094	1	67	5305-00-978-9392	1	15
4935-00-421-7280	3	32	5305-00-978-9394	1	44
5305-00-432-4169	3	25	5305-00-984-6193	3	8
5305-00-432-4202	1	19	5305-00-984-6218	2	7
5305-00-432-4252	1	46	5995-00-985-7882	3	73
2590-00-473-6331	1	70	5995-00-985-8385	3	65
5305-00-497-7401	3	71	5310-00-989-5953	1	4
5340-00-526-3262	1	57	4520-01-010-4059	1	7
5820-00-537-7988	1	47	5935-01-012-3080	3	45
5305-00-543-2866	1	10	5935-01-021-7420	3	29
6145-00-548-1225	3	42	4935-01-028-1331	1	83
6145-00-553-6165	3	27	4935-01-028-1334	1	5
6145-00-557-0194	3	14	5330-01-028-5405	3	7
5940-00-557-1629	3	17	5330-01-028-5406	1	60
4720-00-561-0713	1	82	4935-01-028-5445	1	18
5320-00-582-3499	1	30	4935-01-028-5447	1	9
5325-00-582-3601	3	66	4935-01-028-5449	1	26
5310-00-582-5965	1	22	4935-01-028-5450	3	47
5310-00-584-5272	1	73	4935-01-028-5466	3	60
5310-00-596-7693	3	4	5930-01-028-7131	3	51
5340-00-598-0455	3	26	4935-01-029-0441	3	59
4720-00-629-3238	1	56	4935-01-030-1439	1	65
7110-00-634-9618	1	13	4935-01-030-1443	1	27
5310-00-637-9541	1	37	4935-01-030-1444	1	34
5930-00-655-1514	3	53	4935-01-030-1447	3	20
5975-00-682-0559	3	46	5340-01-030-1520	1	17
8030-00-682-6745	3	63	4935-01-030-6782	3	6
6145-00-682-9937	3	19	5330-01-033-9403	1	59
6145-00-682-9937	3	38	5330-01-033-9404	1	58
5306-00-685-7790	3	54	5320-01-034-2844	1	63
2590-00-693-4171	2	1	5320-01-034-2845	1	64
5305-00-702-4523	1	23	4710-01-040-4024	1	76
5340-00-715-1635	3	28	2540-01-107-3382	1	53
5305-00-719-5184	1	72	5340-01-130-6020	1	38
5306-00-727-4578	1	1	6220-01-151-8270	3	1
5935-00-738-8325	3	10	5940-01-153-8002	3	30
5310-00-809-3078	3	62	4935-01-168-1003	1	31
5310-00-809-5998	1	74	4935-01-170-0851	1	81
6210-00-812-3489	3	22			

FSCM	PART NUMBER	FIGURE NO.	ITEM NO.	FSCM	PART NUMBER	FIGURE NO.	ITEM NO.
81348	AAS7COTY1SIZE2	1	13	80058	CG1773AU30FT	3	73
88044	AN742H8	1	57	42451	CH1-2	1	25
88044	AN96CC10	1	69	89380	CR151A 602	3	30

FSCM	PART NUMBER	FIGURE NO.	ITEM NO.	FSCM	PART NUMBER	FIGURE NO.	ITEM NO.
01317	CS4210-C007AELH	1	43	96906	MS51939-2	1	42
PC058	CX4720VRC10FT	3	44	96906	MS53052	1	70
80058	CX4722AVRC10FT	3	74	96906	MS90725-3	1	33
80058	CX7060AVRC6FT	3	65	96906	MS90725-31	1	32
81349	HWC16-19J9	3	14	96906	MS90725-31	3	75
81348	J-C-580S06CF2/12SRSJ	3	42	96906	MS90725-42	3	61
81348	JC58CS06C-F3-16R-RJ-G123	3	27	96906	MS90727-109	1	72
81349	MILA10957	1	67	96906	MS90727-34	3	68
81349	MILC1283-5GAL	1	71	96906	MS90728-16	1	77
81349	MILC18255TYPE1-1	3	63	96906	MS90728-68	1	10
81349	MILC400C9TYPE5	1	8	80058	MT-1029()/VRC	3	76
81349	MILF68TYSD8-24CL1	6	56	81349	M24243/1-A604	1	63
81349	MILHL3444TYPE1	1	56	81349	M24243/5-A604	1	64
18876	MILI23053-2TYPECO-02HGF2F8	3	35	80205	NAS1100C3-32	1	41
18876	MILI23053-2TYPE2DIAL000BLK	3	34	80063	SCA5276	1	47
81349	MILR5001TY2CLFIRMGDA 0.500X36X36	BULK	2	80063	SCDL415260	3	67
81349	MILR5001TY2CLFIRMGRAO.062X36X36	BULK	1	80063	SCDL415275	3	78
81349	MILS55541	1	84	80063	SCD48664	3	64
81349	MILW16878-4C0-02LGF2-18-0250	3	19	80063	SCD48735	3	77
81349	MILW16878-4C0-02LGF2-18-0250	3	38	80063	SMD415553-4FT	3	72
81349	MILW16878-4TYE10WH	3	18	92878	UH48CTYPEIV	1	7
81349	MILW16878/4E20WHT	1	15	81348	WC596-10-1	3	29
96906	MS14201G7ZP0110	1	76	81348	WC596/12-4	3	45
96906	MS15795-214	1	11	81348	WP455TYPE2	3	46
96906	MS16997-97	1	15	81348	WWP521TY2-1.25	1	75
96906	MS16997-99	1	44	18876	10190635-10	1	38
96906	MS17829-5C	3	55	19207	10190635-9	1	53
96906	MS20600AD6W6	1	30	18876	10698115	1	14
96906	MS20659-129	3	36	18876	10698115-1	2	4
96906	MS21919WG8	1	55	18876	10698115-2	2	5
96906	MS24509-A-35	3	12	18876	10698117	1	34
96906	MS24509-A-5	3	24	18876	10698119	1	49
96906	MS24617-32	3	31	18876	10698124	1	6
96906	MS24622-43	3	49	18876	10698124-1	3	5
96906	MS24630-23	1	86	18876	10698124-2	3	20
96906	MS25C36-113	3	16	18876	10698124-3	3	7
96906	MS25C36-149	3	17	18876	10699527	3	1
96906	MS25232-1683	3	2	18876	10699528	3	32
96906	MS25237-327	3	23	18876	11027100-1	3	21
96906	MS27C39-1-36	57		18876	11040873-3	3	11
96906	MS27183-11	3	62	18876	11508529	1	78
96906	MS27183-13	1	2	18876	11508545	1	17
96906	MS27183-18	1	74	18876	11508854	1	24
96906	MS27183-9	1	29	18876	11508993	1	40
DL371	MS31C2R22-2P	3	9	18876	11508994	1	50
96906	MS3106R22-2S	3	33	18876	11508996	1	20
96906	MS35C58-22	3	53	18876	11508997	1	36
96906	MS35140-5	3	37	18876	11508998	1	54
96906	MS35190-251	1	62	18876	11509007	1	85
96906	MS35190-315	1	39	18876	11509046	1	31
96906	MS35190-317	1	48	18876	11509056	1	51
96906	MS35206-245	3	8	18876	11509078	1	81
96906	MS35206-271	2	7	06542	157TY1CL4STYMO-500X0-375	3	39
96906	MS35307-306	1	23	94990	3825D3859	1	45
96906	MS35307-339	1	1	18876	7092352	2	6
96906	MS35335-31	3	4	19207	7092511	2	1
96906	MS35238-140	1	3	21450	722352	3	6
96906	MS35338-43	2	3	19207	7351855	3	43
96906	MS35338-44	1	22	56232	737893-14REVC	3	22
96906	MS35338-46	1	37	18876	7388325	3	10
96906	MS35338-48	1	73	18876	8035710	1	5
96906	MS35489-38	3	66	18876	8035712	3	59
96906	MS35489-74	3	13	18876	8035713	1	9
96906	MS35649-202	2	2	18876	8035714	3	60
96906	MS35649-282	3	3	18876	8035715	3	51
96906	MS35650-302	1	68	18876	8035717	1	16
96906	MS35650-302	3	58	18876	8035718	1	26
96906	MS35691-11	1	4	18876	8035720	3	47
96906	MS35691-14	3	69	18876	8035720-2	3	48
96906	MS35691-2	1	21	18876	8035721	1	61
96906	MS35751-46	3	54	18876	8035722	1	66
96906	MS39224-7	1	79	18876	8035723	1	65
96906	MS45904-72	3	79	18876	8035724	1	27
96906	MS51861-14	3	25	18876	8035725	1	59
96906	MS51861-25C	3	71	18876	8035726	1	58
96906	MS51861-45C	3	40	18876	8035727	1	60
96906	MS51861-46	1	19	18876	8035996	1	83
96906	MS51861-66	1	46	18876	8035997	1	18
96906	MS51922-1	1	28	19207	8328364	3	50
96906	MS51922-17	1	12	19200	8572414	1	82

FSCM	PART NUMBER	FIGURE	ITEM	FSCM	PART NUMBER	FIGURE	ITEM
		NO.	NO.			NO.	NO.
19207	8674606	1	35	18876	9975271	3	26
18876	9159893	3	28				

## SUPPLEMENTAL NATIONAL STOCK NUMBER AND PART NUMBER INDEX

STOCK NUMBER	FIGURE	ITEM	STOCK NUMBER	FIGURE	ITEM
	NO.	NO.		NO.	NO.
5305-00-059-8463	3	41	5340-00-543-3321	1	80
5310-00-167-0818	3	52	5310-00-934-9751	3	70

FSCM	PART	FIG.	ITEM	FSCM	PART	FIG.	ITEM
	NUMBER	NO.	NO.		NUMBER	NO.	NO.
88044	AN960-10	3	52	18876	11509008	1	52
96906	MS35650-302	3	70	19207	8690474	1	80
80205	NAS1100C3-32	3	41				

**By Order of the Secretary of the Army:**

JOHN A. WICKHAM, JR.  
*General, United States Army*  
*Chief of Staff*

**Official:**

**DONALD J. DELANDRO**  
*Brigadier General, United States Army*  
*The Adjutant General*

**Distribution:**

To be distributed in accordance with DA Form 12-37, Organizational Maintenance and Direct and General Support Maintenance requirements for Bradley Infantry/Calvary Fighting Vehicle(M2/3).



RECOMMENDED CHANGES TO EQUIPMENT TECHNICAL PUBLICATIONS



THEN... JOT DOWN THE DOPE ABOUT IT ON THIS FORM. CAREFULLY TEAR IT OUT. FOLD IT AND DROP IT IN THE MAIL!

SOMETHING WRONG WITH THIS PUBLICATION?

FROM: (PRINT YOUR UNIT'S COMPLETE ADDRESS)

CDR, Tooele Army Depot  
ATTN: AMXTE-MAE  
Tooele, UT 84074

DATE SENT

14 January 1980

PUBLICATION NUMBER

TM 9-1430-560-20P-3

PUBLICATION DATE

22 Feb 1979

PUBLICATION TITLE Data Processing Station, Guided Missile Systems, Semi-trailer Mounted AN/MSO-79 (XO-1)

BE EXACT... PIN-POINT WHERE IT IS

PAGE NO	PARA-GRAPH	FIGURE NO	TABLE NO
2-290		151	
4-5		1	

SAMPLE

IN THIS SPACE TELL WHAT IS WRONG AND WHAT SHOULD BE DONE ABOUT IT:

Item 5 is listed as a Screw but should be listed as Knob.

In bubble J, callout 8 is depicted as a Washer and in bubble G, callout 8 is depicted as a Terminal Board. Recommend that bubble J callout 8 be changed to callout 2.

NOTE TO READER:

Your comments will go directly to the cataloger responsible for this manual, and he will prepare the reply that is returned to you. To help him in his evaluation of your recommendations, please explain the reason for each of your recommendations, unless the reason is obvious.

All comments will be appreciated, and will be given immediate attention. Handwritten comments are acceptable.

For your convenience, blank "tear out" forms, pre-printed, addressed, and ready to mail, are included in this manual.

PRINTED NAME GRADE OR TITLE AND TELEPHONE NUMBER

JOHN H. DOE, Autovon 333-2521  
Act Ermn. Mah Comp Rbld Sec. EFC Br

SIGN HERE

DA FORM 2028-2  
1 JUL 79

PREVIOUS EDITIONS ARE OBSOLETE.

PS --IF YOUR OUTFIT WANTS TO KNOW ABOUT YOUR RECOMMENDATION MAKE A CARBON COPY OF THIS AND GIVE IT TO YOUR HEADQUARTERS

RECOMMENDED CHANGES TO EQUIPMENT TECHNICAL PUBLICATIONS



THEN... JOT DOWN THE DOPE ABOUT IT ON THIS FORM. CAREFULLY TEAR IT OUT. FOLD IT AND DROP IT IN THE MAIL.

**SOMETHING WRONG WITH THIS PUBLICATION?**

FROM (PRINT YOUR UNIT'S COMPLETE ADDRESS)

DATE SENT

PUBLICATION NUMBER

PUBLICATION DATE

PUBLICATION TITLE

BE EXACT PIN-POINT WHERE IT IS

PAGE NO

PARA GRAPH

FIGURE NO

TABLE NO

IN THIS SPACE TELL WHAT IS WRONG AND WHAT SHOULD BE DONE ABOUT IT:

PRINTED NAME GRADE OR TITLE AND TELEPHONE NUMBER

SIGN HERE

FILL IN YOUR  
UNIT'S ADDRESS

FOLD BACK

TEAR ALONG PERFORATED LINE

DEPARTMENT OF THE ARMY

POSTAGE AND FEES PAID  
DEPARTMENT OF THE ARMY  
DOD 314



OFFICIAL BUSINESS  
PENALTY FOR PRIVATE USE \$300

Commander  
U.S. Army Missile Command  
ATTN: AMSMI-MMC-LS-LP  
Redstone Arsenal, AL 35898-5238

# THE METRIC SYSTEM AND EQUIVALENTS

## WEIGHT MEASURE

1 Centimeter = 10 Millimeters = 0.01 Meters = 0.3937 Inches  
 1 Meter = 100 Centimeters = 1000 Millimeters = 39.37 Inches  
 1 Kilometer = 1000 Meters = 0.621 Miles

## WEIGHTS

1 Gram = 0.001 Kilograms = 1000 Milligrams = 0.035 Ounces  
 1 Kilogram = 1000 Grams = 2.2 lb.  
 1 Metric Ton = 1000 Kilograms = 1 Megagram = 1.1 Short Tons

## LIQUID MEASURE

1 Milliliter = 0.001 Liters = 0.0338 Fluid Ounces  
 1 Liter = 1000 Milliliters = 33.82 Fluid Ounces

## SQUARE MEASURE

1 Sq. Centimeter = 100 Sq. Millimeters = 0.155 Sq. Inches  
 1 Sq. Meter = 10,000 Sq. Centimeters = 10.76 Sq. Feet  
 1 Sq. Kilometer = 1,000,000 Sq. Meters = 0.386 Sq. Miles

## CUBIC MEASURE

1 Cu. Centimeter = 1000 Cu. Millimeters = 0.06 Cu. Inches  
 1 Cu. Meter = 1,000,000 Cu. Centimeters = 35.31 Cu. Feet

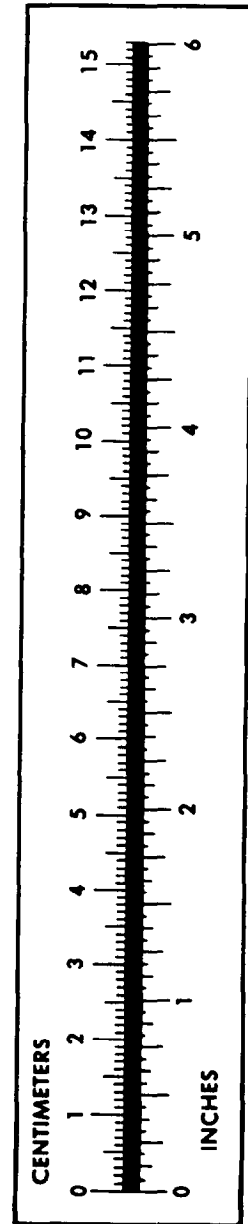
## TEMPERATURE

$5/9(^{\circ}\text{F} - 32) = ^{\circ}\text{C}$   
 212° Fahrenheit is equivalent to 100° Celsius  
 90° Fahrenheit is equivalent to 32.2° Celsius  
 32° Fahrenheit is equivalent to 0° Celsius  
 $9/5^{\circ}\text{C} + 32 = ^{\circ}\text{F}$

## APPROXIMATE CONVERSION FACTORS

TO CHANGE	TO	MULTIPLY BY
Inches	Centimeters	2.540
Feet	Meters	0.305
Yards	Meters	0.914
Miles	Kilometers	1.609
Square Inches	Square Centimeters	6.451
Square Feet	Square Meters	0.093
Square Yards	Square Meters	0.836
Square Miles	Square Kilometers	2.590
Acres	Square Hectometers	0.405
Cubic Feet	Cubic Meters	0.028
Cubic Yards	Cubic Meters	0.765
Fluid Ounces	Milliliters	29.573
its	Liters	0.473
arts	Liters	0.946
allons	Liters	3.785
Ounces	Grams	28.349
Pounds	Kilograms	0.454
Short Tons	Metric Tons	0.907
Pound-Feet	Newton-Meters	1.356
Pounds per Square Inch	Kilopascals	6.895
Miles per Gallon	Kilometers per Liter	0.425
Miles per Hour	Kilometers per Hour	1.609

TO CHANGE	TO	MULTIPLY BY
Centimeters	Inches	0.394
Meters	Feet	3.280
Meters	Yards	1.094
Kilometers	Miles	0.621
Square Centimeters	Square Inches	0.155
Square Meters	Square Feet	10.764
Square Meters	Square Yards	1.196
Square Kilometers	Square Miles	0.386
Square Hectometers	Acres	2.471
Cubic Meters	Cubic Feet	35.315
Cubic Meters	Cubic Yards	1.308
Milliliters	Fluid Ounces	0.034
Liters	Pints	2.113
Liters	Quarts	1.057
ers	Gallons	0.264
ms	Ounces	0.035
ograms	Pounds	2.205
Metric Tons	Short Tons	1.102
Newton-Meters	Pounds-Feet	0.738
Kilopascals	Pounds per Square Inch	0.145
ometers per Liter	Miles per Gallon	2.354
ometers per Hour	Miles per Hour	0.621



**PIN: 053430-000**